



NOX Corp.



LOOM
WOVEN DESIGN FLOORING

ECOCCLICK+
EASIEST & STRONGEST GLUELESS LVT

ECOLAY+
EASIEST & STRONGEST GLUELESS LVT

ORCHID+
DESIGN LVT FLOORING

TABLE OF CONTENTS



About Nox

NOX Heritage	03
NOX Promise	03
The NOX Difference	04
Production Facilities	04
Milestones	05

LOOM+ 06

The LOOM+ Technology	07
The LOOM+ Design	07
LOOM+ Collection	08-09
LOOM+ Create Your Own Design	10-11

ECOCLICK+ 12

The ECOCLICK+ Difference	13
Advantages of ECOCLICK+	13
Grande ECOCLICK+ Plank	14
ECOCLICK+ Plank	15
ECOCLICK+ Tile	16
Diverse Design Solution	16

ORCHID+ 17

The ORCHID+ Difference	18
ORCHID+ Design Collection	18
Neutral Wood	19
Warm Wood	20
Dark Wood	21
Stone	22
Design	23
Diverse Design Solution	24

ECOLAY+ 25

The ECOLAY+ Difference	26
Advantages of ECOLAY+	26
ECOLAY+ Plank	27
Grande ECOLAY+ Plank	28
ECOLAY+ Plank	28
ECOLAY+ Tile	29
Grande ECOLAY+ Tile	30
ECOLAY+ Tile	30
Grand Puzzle Tile	32
The ECOLOCK+ Difference	33
Advantages of ECOLOCK+	33

Technical Information	34
Certifications	35
About BCI	36

NOX Heritage



WHO WE ARE

**OUR HERITAGE HAS DEFINED
OUR EXPERIENCE AND
PHILOSOPHY.**

Rooted in a chemical engineering company established in 1966, NOX Corporation has built its core expertise in producing and processing various resin compounds for applications from consumer to industrial goods.

With this heritage, NOX Corporation was founded in 1994, as family owned company, focusing on LVT flooring innovation, design and manufacturing for global customers.

NOX Promise



WHAT WE DELIVER

**ENABLES ITS CUSTOMERS
TO DIFFERENTIATE,
GROW AND LEAD.**

CONTROL: Delivered with Quality

NOX is the only LVT manufacturer producing not only superior quality in our finished product but in all the components. This includes every layer and every process from Calendering to Printing and Lamination. As a result, we can promise to control the quality of all these components and the ability to deliver our products on time, without defects.

CAPABILITY: Customized Innovation

Over 4,000 visual libraries, 5 different installation fits, different edge cuttings, +10 thickness each layer & the World's First Click LVT, NOX provides new opportunities with proven

performance of First-to-market creation in both product and manufacturing. NOX promises to serve specific markets and needs of our individual customers.

CAPACITY: Reliable Growth

As one of the largest LVT manufacturers globally, and bringing our capacity to over 50 million square meters annually, NOX operates with the commitment of investment for our customers needs allowing stable and significant growth for customers.

NOX Difference



WHAT WE DELIVER

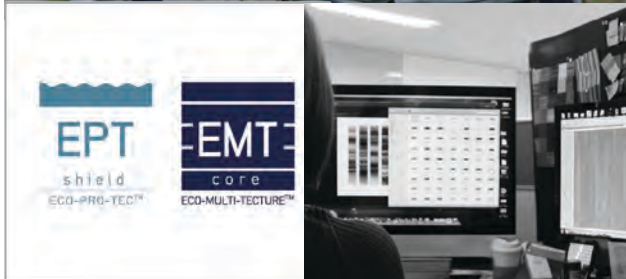
GLOBALLY, NOX CONTINUE TO LEAD THE INDUSTRY W/ INNOVATION & EXPERTISE

NOX IVP

Since year 2000, NOX (IVP) Integrated Vertical Production System is the World's First & Only LVT production process ensuring superior quality control and ability to meet the different needs of our customers.

NOX EPT™ Shield & EMT™ Core-A Global Leader

With more than 50 years of proven success, NOX EPT™ shield & EMT™ core has been the foundation for innovation, i.e. Click LVT and Loose-lay in 2005, providing the most stable and eco-friendly products which are applied for both PVC and NON-PVC resin compounds.



NOX In-House Design Solution

Our unique in-house printing capability provides thousands of design development for our global demand. NOX continues to lead the trend of LVT flooring.

Production Facilities



NOX Milestones

OUR HISTORY

INFRASTRUCTURE DEVELOPMENT

July 2015	Founding of NOX US Ohio factory
Feb 2014	Installed 6th LVT continuous Laminate line
Sept 2013	Installed 5th LVT continuous Laminate line
Apr 2011	Installed 4th LV continuous Laminate line Installed Calendaring lines for LVT layers
Jan 2008	First Exhibition at Surfaces in US
Oct 2007	Installed 3rd LVT continuous Laminate line
Mar 2007	First Exhibition at Shanghai Domotex
Oct 2006	Installed new Calendaring VCT line
Jan 2006	First Exhibition at Honover Domotex
May 2005	Development of LVT Click tech / product
Apr 2004	Development of Loose lay & locking tile
Sept 2001	Registered patent for PVC tile production
Aug 2001	Installed 2nd LVT Continuous Laminate line



INDUSTRY RECOGNITION

Dec 2016	GreenLable in Singapore
Jun 2015	EDP certificatin in US
Sept 2011	Obtained Floor Score certification in US DIBT U mark in Germany, A+ in France
Jul 2011	Award SMALL-GIANT by Korean Government
May 2009	Patent Registration of LVT Click (Korea & Japan)
Apr 2009	Award KOREA SEAL OF EXCELLENCE (only among flooring manufacturers) by Korean Government
Nov 2008	Appointed 'World-Class Corporation by Korean Government
May 2008	launched Loose lay product in Europe
Jun 2005	Obtained ASTM in US
Aug 2003	Obtained ISO Certification (ISO 9001)
Oct 2001	Designated Premium Class Company by Korean Government
Apr 2000	Obtained ISO Certification (ISO 9002)
Nov 1999	Obtained JIS Certification (JIS A5705)
Mar 1995	Obtained KS Certification (KS M3802)

AWARDS

July 2015	'IDEA Top Winner
Jan 2015	Selected as 'innovation @ DOMOTEX Hannover'
Oct 2014	Japan 'Good Design award' winner
Feb 2014	'Red Dot award' winner
Dec 2013	\$100 Million EXPORT TOWER (by Korean Government)
Jun 2013	'Silver Award' at NEOCON
Jun 2012	'Gold Award' at NEOCON
Jan 2012	'Best innovation Award' at US Surfaces Conference



LOOM⁺ DIFFERENCE

DESIGN and TECHNOLOGY
are woven together

Infinite DESIGN spectrum

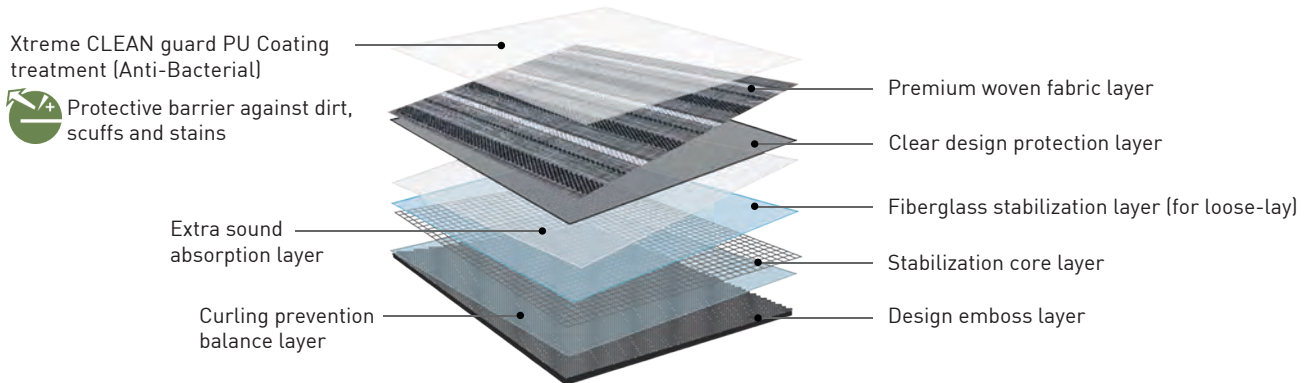
Only LOOM⁺ enables unique variation of creating your own floor by mixing and matching different patterns in two file size

Distinguished NOX Ecotecture® Multi-layer Property

The first woven flooring with proven NOX Ecotecture® Multi-layer property that ensures the most stable and durable installation.

Distinguished NOX Ecotecture® Multi-layer Property

NOX Ecotecture® Multi-layer Property featured with innovative functionality and safety, proven in more than 50 countries over 20 years



Safe

Certified non-toxic, phthalate-free, and fiberglass-free fabric



Quick

Quick and Easy EC OLAY® installation without glue



Fray - proof

Clean-cut finishing for preventing fraying



Clean

Xtreme CLEAN guard PU Coating treatment applied to resist stain by not absorbing liquids and thus making spills quick and easy to clean.



Easy

Minimal cleaning time and low maintenance



Non - Slip

Slip - resistance with woven fabric surface



Tough

Approved for heavy commercial use



Silent & Soft

Soft surface absorbing sound



Colorfast

Colorfast properties retain gorgeous original color over time



Dimensional stability & Consistent thickness

Consistent product thickness by patterns and size for mixing and matching different patterns

The LOOM+ DESIGN

Play with Color, Size and Texture

Profound Color Composition

Realizing multiple tones of color - carefully selected by artists - we provide you with very unique colors that expresses LOOM+ in harmony with surrounding interiors.

Infinite array of color & texture

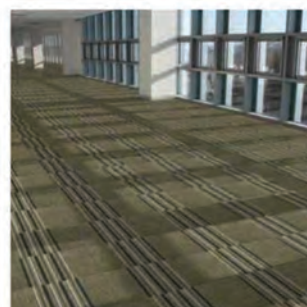
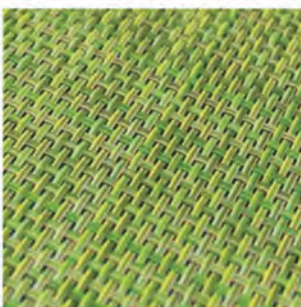
Available in 47 colors covering diverse tones like neutral, cool, warm, light, and dark in four different yarn thicknesses, we give you seven unique design patterns.

Designed for mix & match

Creative and unique 'mix & match' only by LOOM+ is realized by introducing the same weaving system to seven design patterns.

Optimal 2 Size variation

With our unique 2 module sizes of 50cm x 50cm and 50cm x 100cm, the first introduced in woven flooring market, you can elevate the flat environments to inspiring interior spaces.



50x50cm
Standard size



100x50cm
Double size

LOOM⁺ COLLECTION

ACCENTS

STYLISH & DECORATIVE

Mix & match installation with knit and hand-stitch lines provides diverse floor designs. Sophisticated weaving structure coming in different thicknesses realizes never-seen before innovative floor textures.



FR-2102



FR-2103



FR-2104



FR-2105



FR-2106

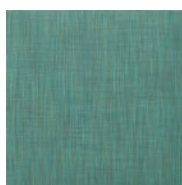
KNIT

COZY & ELEGANT

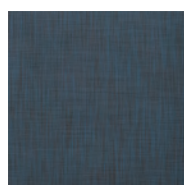
Having a structure most widely used in home interior materials, our designs harmonize well with various spaces. Although it has solid color tone in general, profound colors can be represented by mixing neutral colors like gray and brown.



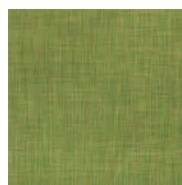
FT-2201



FT-2202



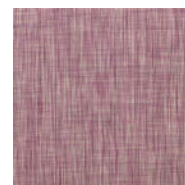
FT-2203



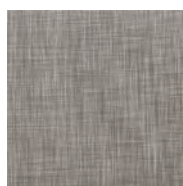
FT-2204



FT-2206



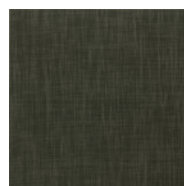
FT-2207



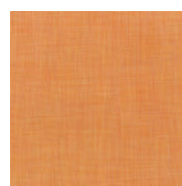
FT-2208



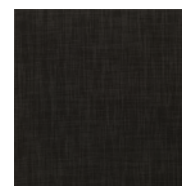
FT-2209



FT-2210



FT-2211



FT-2212

PIN-STRIPE

MODERN & RETRO-POP

Now with modern sensitivity, retro-pop mood and unique colors enable unique one-of-a-kind point design in commercial spaces



FR-2301



FR-2302



FR-2304



FR-2306



FR-2308

CRAFT

NATURAL & COMFORTABLE

Our basic weaving structure pattern comfortably fits deluxe design for any space. Thanks to our reliable basic color adding capability, we are able to provide elegant feel to offices and banks.



FT-2001



FT-2003



FT-2004



FT-2005



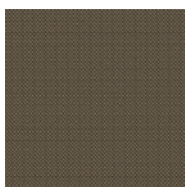
FT-2007



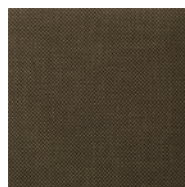
FT-2008



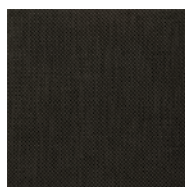
FT-2009



FT-2010



FT-2011



FT-2012



FT-2014



FT-2015



FT-2016



FT-2018



FT-2019



FT-2020

CORD

COSMOPOLITAN STYLE

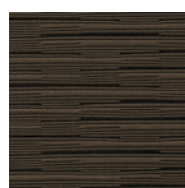
It has a structure enabling modern design in various spaces. Brown colors covering from neutral and dark tones provide high-end ambiance to commercial spaces and offices.



FT-1204



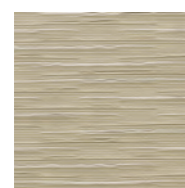
FT-1205



FT-1206



FT-1208



FT-1209

HAND-STITCH

BACK TO NATURE

The structure tightly woven with lattice pattern, providing a feel similar to rattan, harmonizes well with various wood furniture. It can be widely used to design spaces of natural tone.



FT-1802



FT-1803



FT-1804

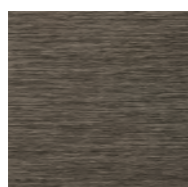


FT-1806

VINTAGE

MODERN RUSTIC

The tough structure with unique woven texture and dark brown color tone will create surface interest. Unique striations of Vintage line accentuate the pattern for a chic upgrade to the common textile visual.



FT-1302

LOOM⁺

CREATE YOUR OWN DESIGN

Art Gallery & Museum



LOOM PLAY #9

Restaurant



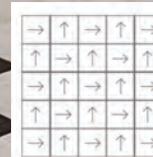
LOOM PLAY #10

Hotel & Resort



LOOM PLAY #7

Retail Shop



LOOM PLAY #1

Airport



KNIT-KNIT
FT-2208 FT-2212



Corporate



PIN STRIPE + CRAFT
PIN STRIPE FR-2301
CRAFT FT- 2014



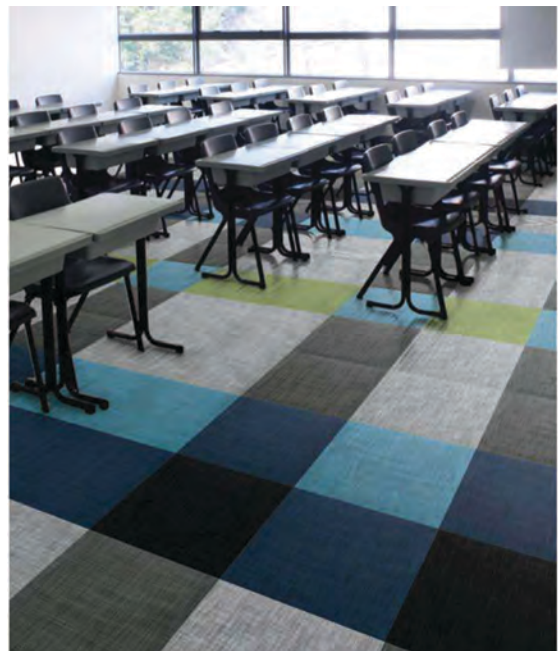
Hospitality & Health Care



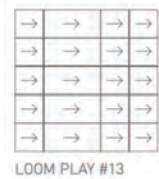
CRAFT
FT-2011



Education & Libraries



KNIT-KNIT
FT-2202 FT-2203 FT-2204
FT-2208 FT-2209 FT-2212





Global Click LVT Pioneer since 2005

Proven Click LVT installed in global market mainly for heavy commercial installation with its unique structure of unparalleled dimensional stability and patented click joint system, 'Click'n go and Drop'n go!®'

ECOCLICK+
EASIEST & STRONGEST GLUELESS LVT

ECOCCLICK⁺ Difference

With NOX Ecotecture® Technology

Nox corporation, one of the world-largest LVT manufacturers, traces its roots to chemical engineering with expertise in core components of LVT flooring for more than 495 years. Its NOX ECOTECTURE® TECHNOLOGY is the foundation of **ECOCCLICK⁺** innovation, providing the most stable and eco-friendly products.

Proven innovation of **ECOCCLICK⁺** since 2005

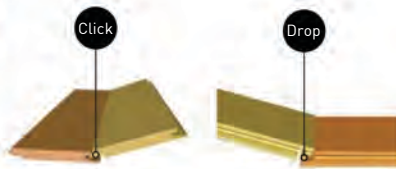


1. Unique patented Click 'n go and Drop 'n go!® click system

- The easiest and strongest click system in the market

2. Distinguished NOX Ecotecture® Multi-Layer Property

- Ensures the unparalleled dimensional stability and extra sound absorption of **ECOCCLICK⁺**



Extra ceramic PU coating treatment (Anti-Bacterial)

Clear design protection layer

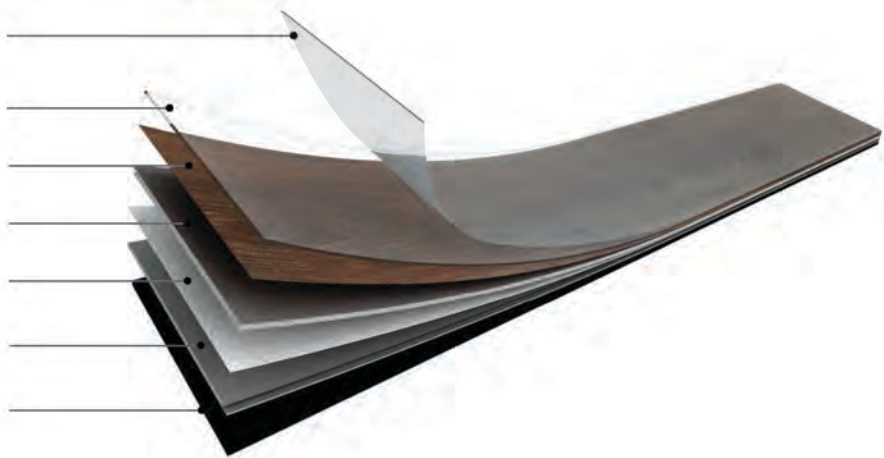
HD design print layer

Extra absorption layer

Fiberglass stabilization layer

Stabilization core layer

Curling prevention balance layer



Advantages of **ECOCCLICK⁺**



Most diverse sizes

- 2 plank sizes including **grande** plank size
- 2 tile sizes including **grande** tile size



Certified low VOCs and non-phthalate technology



Easier maintenance than traditional laminated wood and natural stone flooring



Superior dimensional stability with

- NOX Ecotecture® Multi-Layer Property
- Fiberglass stabilization layer



100% recyclable



HD Design



Easy to install, replace and remove



Ultra water-resistant



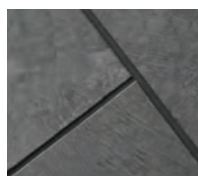
Silent and soft floor



Suitable for heated floor

The first in LVT, 'Built-In-Grout' click system of **ECOCCLICK⁺**

Just click and the natural grout line will appear, allowing for the natural elegance of stone and ceramic tiles to shine. **ECOCCLICK⁺** can be supplied with built-in grout type according to your request.

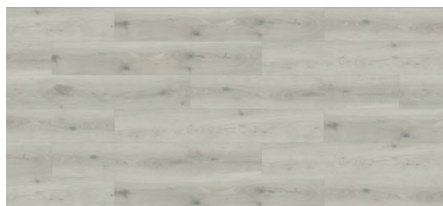


Grande Ecoclick+ Plank

Dimension | 235 x 1,505mm

Grand Oak | White

NCG-6310

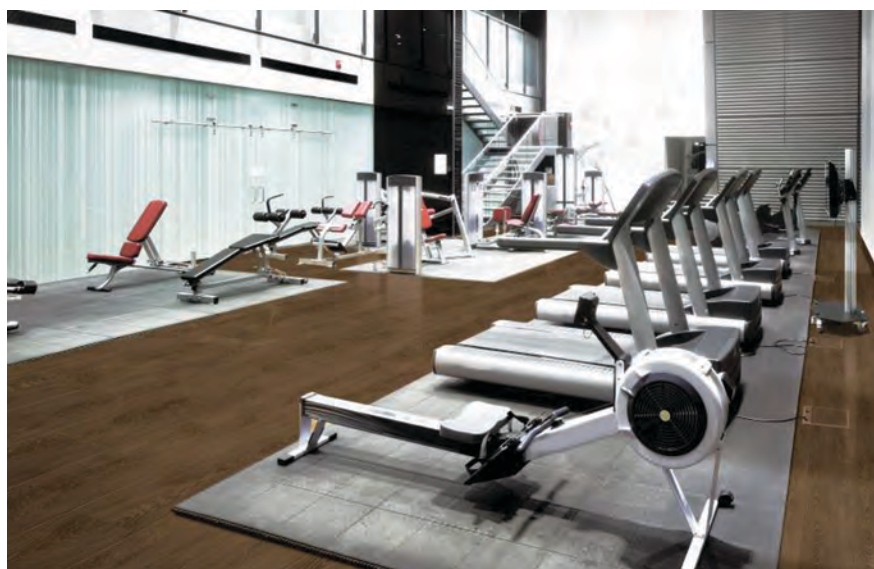


Grand Oak | Black

NCG-6311



Restaurant | Grand Oak NCG-6311



European Oak | Golden

NCG-5120



European Oak | Brown

NCG-5121



Ecoclick+ Plank

Dimension | 185 x 1212mm

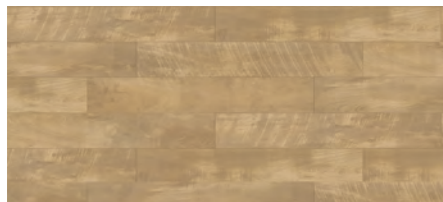
Vintage Pear | White

NCP-6510



Vintage Pear | Natural

NCP-6511



Vintage Pear | NCP-6510



Hickory | Brown NCP-6431

European Oak | Golden NCP-5122



European Oak | Maroon NCP-5123



Vintage Pear | White NCP-6510



Vintage Pear | Natural NCP-6511



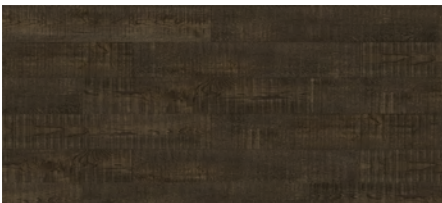
Hickory | Brown [Natural Embossed In Register] NCP-6430



Hickory | Brown [Natural Embossed In Register] NCP-6431



Western Oak | Brown NCP-6711



Western Oak | Grey NCP-6710



Ecoclick+ Tile

Dimension | 304.8 x 609.6mm

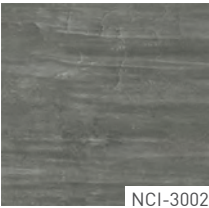


Proto Concrete | White



NCI-3001

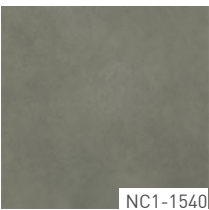
Photo Concrete | Grey



NCI-3002

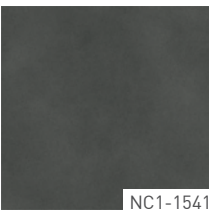
Dimension | 457.2 x 914.4mm

Sand | Grey



NCI-1540

Sand | Dark

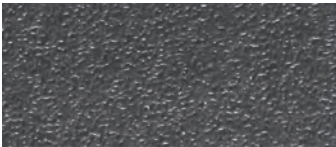


NCI-1541

Diverse Design Solution

Surface Embossing

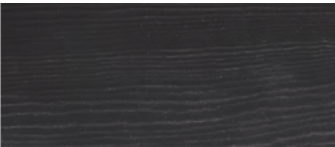
ECOCLICK+ with 7 different surface embossing textures including natural Embossed-In-Register



I-03 Sand structure



I-14 Wood structure



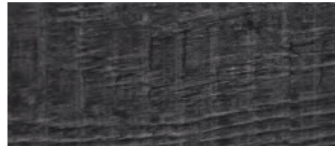
I-19 Rustic wood structure



I-23 Hand-planned structure



I-35 Design wood structure



I-43 Classic saw-marked structure



P-33 natural Embossed-in-Register : Wood

Easy & Quick Installation

1. Unpacked



2. Angle & Click



3. Drop & Click



Rediscover Orchid Style

On a mission to offer Orchid Style, the most stylish and eco-friendly flooring, we present new **ORCHID+** design LVT flooring, 90 of our latest and finest designs featuring Wood, Stone and Design lines.

ORCHID+
DESIGN LVT FLOORING

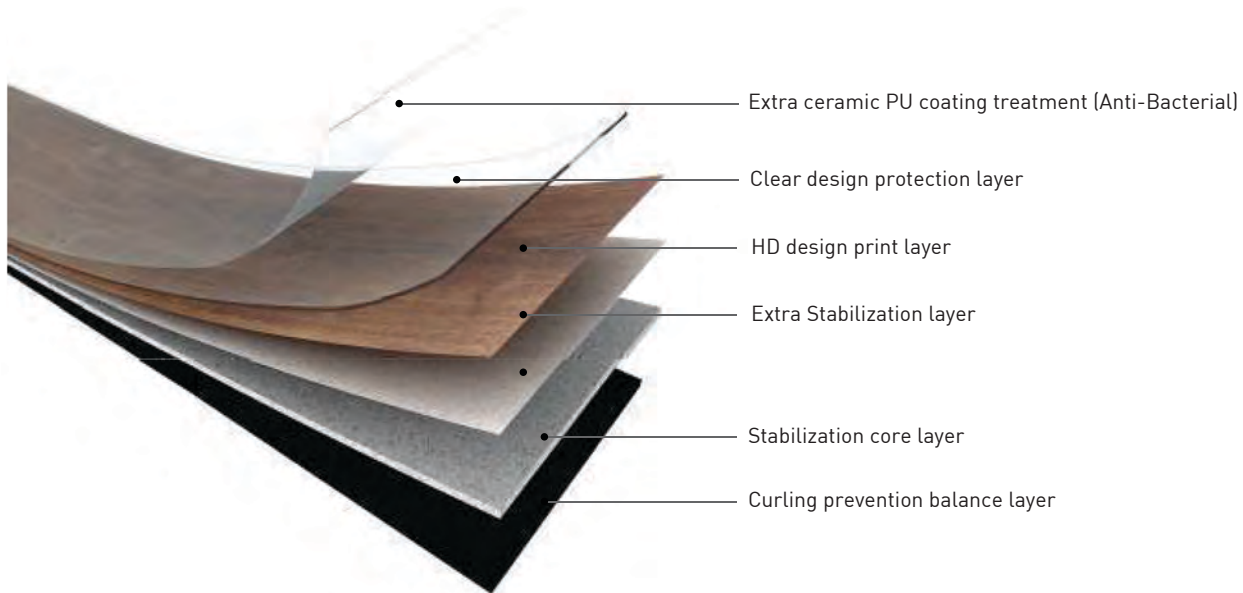
ORCHID⁺ Difference

With NOX Ecotecture® Technology

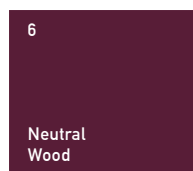
Nox corporation, one of the world-largest LVT manufacturers, traces its roots to chemical engineering with expertise in core components of LVT flooring for more than 45 years. Its NOX ECOTECTURE® TECHNOLOGY is the foundation of ORCHID⁺ innovation, providing the most stable and eco-friendly products.

NOX Ecotecture® Multi-Layer Property

The first in LVT flooring, our distinguished Ecotecture® Multi-layer structure ensures the unparalleled dimensional stability and eco-friendliness of ORCHID⁺



ORCHID⁺ Design Collection



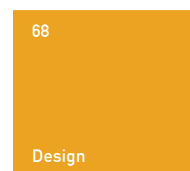
Authentic and modern collection of woods with quiet color tones that balance beautifully



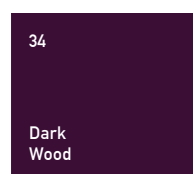
Authentic reproduction from smooth marble to concrete adding richness and depth



Radiant collection of woods, bringing gentle brightness and intimate warmth



Unique and stylish approach for modern space



Comprehensive spectrum of dark wood with lustrous depth





Drift Wood | Blond NOP-6011

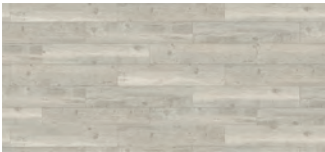
Washy Oak | White NOP-4601



Washy Oak | Natural NOP-4602



Drift Wood | White NOP-6010



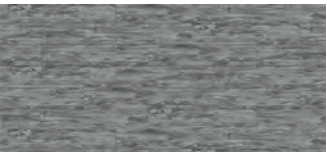
Drift Wood | Blond NOP-6011



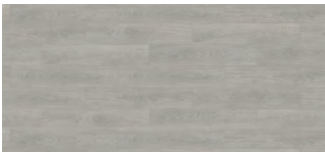
Vanished Wood | Light NOP-5820



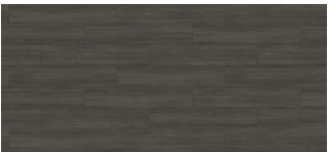
Vanished Wood | Dark NOP-5821



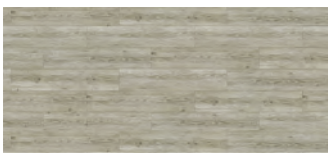
Maple | Grey NOP-5406



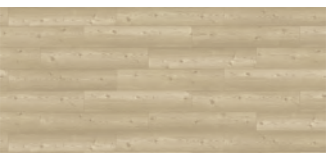
Stripe Wood | Grey NOP-4804



Brushed Pine | Snowy NOP-5020



Classic Pine | Beige NOP-6801



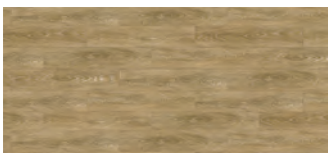
Natural Oak | Grey NOP-4701



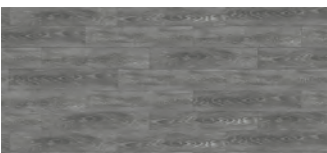
Limed Oak | Golden NOP-5701



Europen Oak | Natural NOP-5124



Europen Oak | Grey NOP-5125



Weathered Pine | Grey NOP-4010



Hickory | Grey NOR-6420
[Natural Embossed-In-Register]



Dimension | 180 x 1200mm




Drift Wood | White NOP-6010

Warm Wood

Dimension | 186 x 940mm



Maple Natural NOP-5405	Classic Pine Natural NOP-6802	Cherry Beige NOP-4210	Cherry Golden NOP-4211
Pure Bamboo Natural NOP-5910	Pure Bamboo Golden NOP-5911	Brushed Pine Blond NOP-5021	Natural Oak Honey NOP-4702
Stripe Wood Brown NOP-4803	Scandinavian Oak Natural NOP-5610	Washy Oak Brown NOP-4603	Walnut Brown Brown NOP-4305
Country Oak Amber NOP-4405	Chestnut Brown NOP-5320		
Antique Oak Amber NOP-5220	Classic Oak Brown NOP-4901		
Hickory Brown [Natural Embossed-In-Register] NOP-6421	Teak Orange [Natural Embossed-In-Register] NOP-4110		
Dimension 180 x 1200mm			



Residence | Washy Oak NOP-4604

Classic Pine Grey NOP-6803	Classic Pine Brown NOP-6804	Chestnut Brown NOP-5321	Weathered Pine Brown NOP-4011
European Oak Brown NOP-5127	European Oak Black NOP-5126	A photograph of a modern interior space featuring dark wood flooring. The room has white walls, a large window with a sheer curtain, and a dark wood cabinet. The floor is made of dark wood planks.	
Washy Oak Black NOP-4604	Walnut Grey NOP-4306		
Country Oak Brown NOP-4406	Teak Brown NOP-4111 [Natural Embossed-In-Register]		
Antique Oak Green NOP-5221	Scandinavian Oak Dark NOP-5611		
Limed Oak Dark Brown NOP-5702	Classic Oak Dark NOP-4902		

Residence | Washy Oak NOP-4604

Stone

Dimension | 304.8 x 609.6mm



Serpeggiante | Ivory



NOI-3150

Serpeggiante | Brown



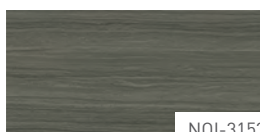
NOI-3152

Serpeggiante | Grey



NOI-3151

Serpeggiante | Dark



NOI-3153

Mocha Cream | White



NOI-1930

Mocha Cream | Grey



NOI-1931

Sand Marble | Warm



NOI-1340

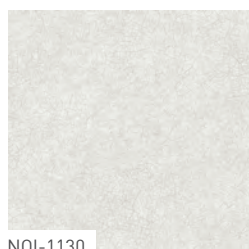
Sand Marble | Black



NOI-1341

Dimension | 457.2 x 457.2mm

Broken Concrete | White



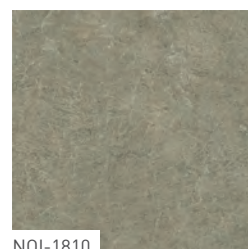
NOI-1130

Broken Concrete | Grey



NOI-1131

Natural Marble | Grey



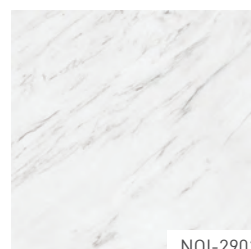
NOI-1810

Natural Marble | Dark Grey



NOI-1811

Bianco | White



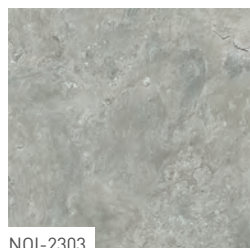
NOI-2901

Grafitti Concrete | Dark Grey



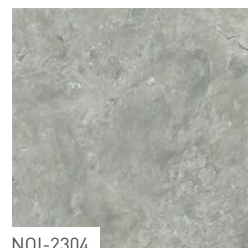
NOI-1250

Fresco | Grey



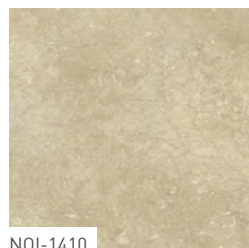
NOI-2303

Fresco | Dark



NOI-2304

Antique Marble | Beige



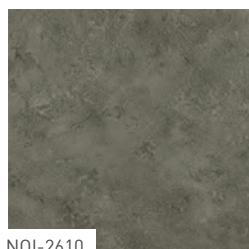
NOI-1410

Antique Marble | Brown



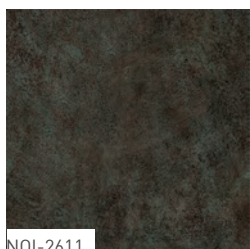
NOI-1411

Metallic Slate | Red

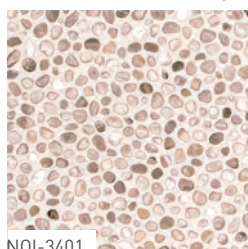


NOI-2610

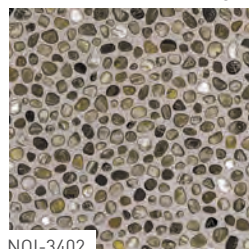
Metallic Slate | Grey



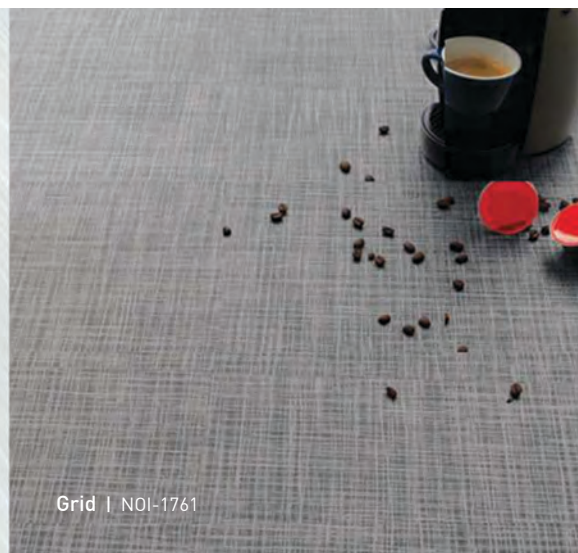
NOI-2611

Pebble | Brown
[Natural Embossed-In-Register]

NOI-3401

Pebble | Grey
[Natural Embossed-In-Register]

NOI-3402



Monochrome | Silver



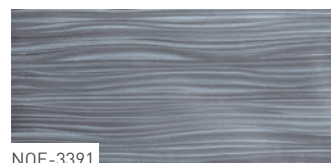
Monochrome | Black



Wave | White



Wave | Blue



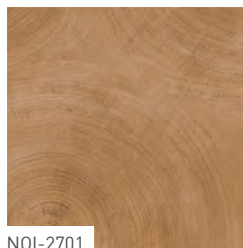
Grid | Grey



Grid | Dark Grey



Mahoni | Brown



Mahoni | Dark Brown



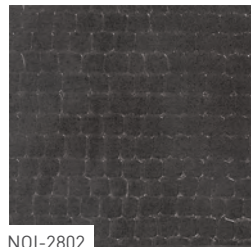
Modern Leather | Brown



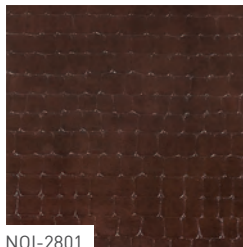
Modern Leather | Grey



Real Leather | Dark



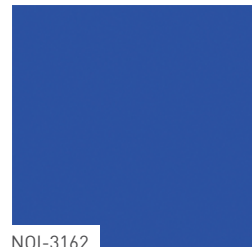
Real Leather | Brown



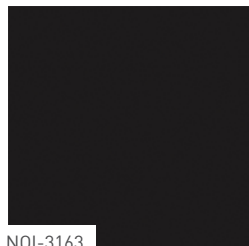
Color Play | Red



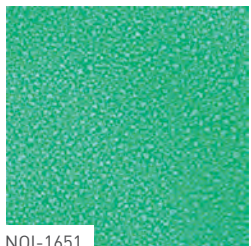
Color Play | Blue



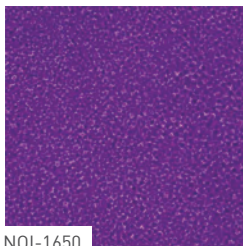
Color Play | Black



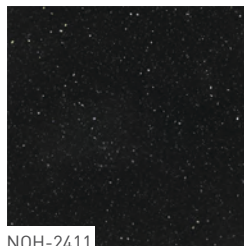
Twinkle | Green



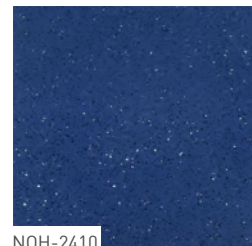
Twinkle | Violet



Starry Night | Black



Starry Night | Blue



Diverse Design Solution

Surface Embossing

ORCHID+ with 6 different surface embossing textures including natural Embossed-In-Register



I-01 High-gloss structure



I-03 Sand structure



I-04 Ceramic structure



I-06 Slate structure



I-14 Wood structure



I-17 Natural wood Structure



I-19 Rustic wood Structure



I-23 Hand-planed structure



I-29 Leather structure



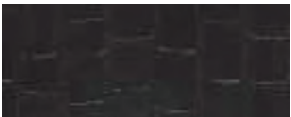
I-32 Bead structure



I-35 Design wood structure



I-39 Fire stone structure



I-44 Real leather structure



P-18 Natural Embossed-In-Register : Pebbles



P-29 Natural Embossed-In-Register : Rustic



P-33 Natural Embossed-In-Register : Wood

Edge Type

ORCHID+ can be supplied in 3 types of edges according to your request



Round Edge

Available for all plank & tile sizes (except 186 x 940 mm plank size)



Square Edge

Available for all plank & tile sizes



Bevel Edge

Available for all plank & tile sizes

The first in LVT, “Built-In-Grout” available

When installed, the natural grout line will appear, allowing for the natural elegance of stone and ceramic tiles to shine. ORCHID+ can be supplied in grout type according to your request.





No Stick, No Click, Just Lay

Proven loose-lay system installed in global market mainly for heavy commercial installation with its unique structure of unparalleled dimensional stability, diverse designs, and size options

ECOLAY+

EASIEST & STRONGEST GLUELESS LVT

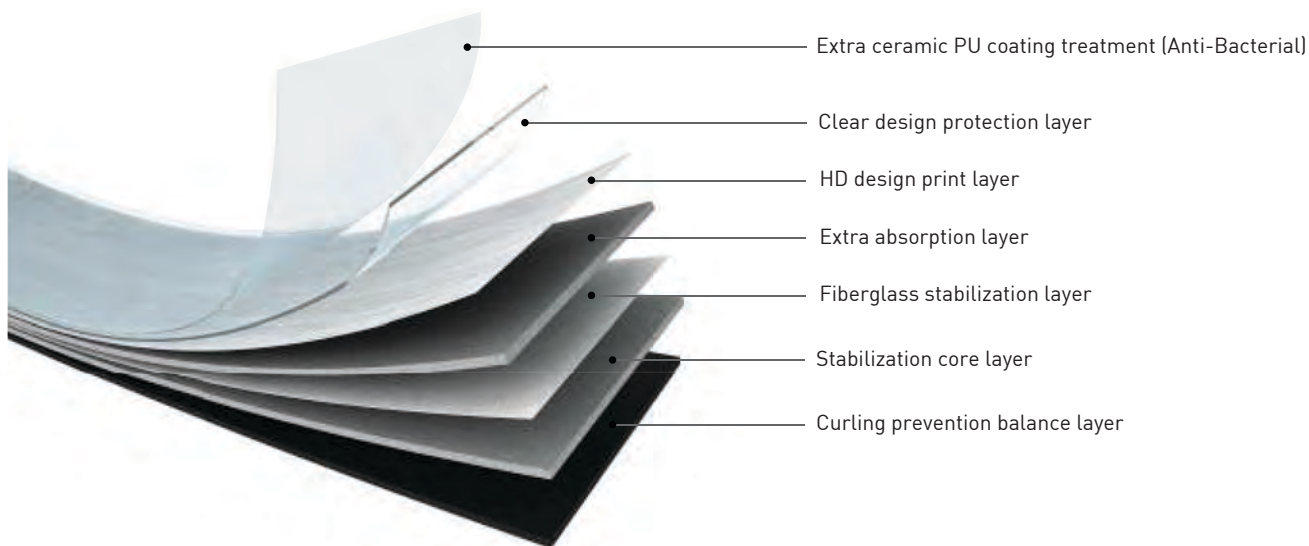
ECOLAY⁺ Difference

With NOX Ecotecture® Technology

Nox corporation, one of the world-largest LVT manufacturers, traces its roots to chemical engineering with expertise in core components of LVT flooring for more than 495 years. Its NOX ECOTECTURE® TECHNOLOGY is the foundation of ECOLAY⁺ innovation, providing the most stable and eco-friendly products.

Proven innovation of ECOLAY⁺ since 2003

Distinguished NOX Ecotecture® Multi-Layer Property ensures the unparalleled dimensional stability and extra sound absorption of ECOLAY⁺

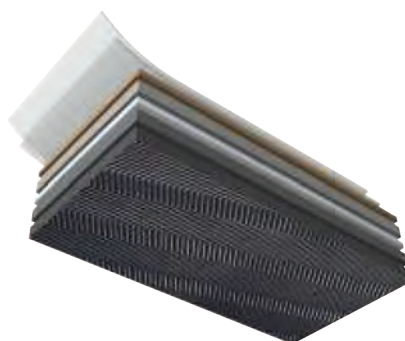
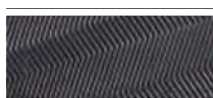


Advantages of ECOLAY⁺

Most diverse sizes - 2 plank sizes including grande plank size - 2 tile sizes including grande tile size	Certified low VOCs and non-phthalate technology	Easier maintenance than traditional laminated wood and natural stone flooring
Superior dimensional stability with - NOX Ecotecture® Multi-Layer Property - Fiberglass stabilization layer	100% recyclable	HD Design
Easy to install, replace and remove	Ultra water-resistant	
Silent and soft floor	Suitable for heated floor	

ECOLAY⁺ Non-skid backing

ECOLAY⁺ can supplied with non-skid backing type according to your request



Ecolay+ Plank

Grande size of wood plank with rich and versatile look

Dimension :

235 X 1,505mm / 180 X 1,201mm

Total Thickness : 5mm



Grande Ecolay+ Plank

Dimension | 235 x 1,505mm

Santana Oak | Grey

NLG-6220



Santana Oak | Brown

NLG-6221



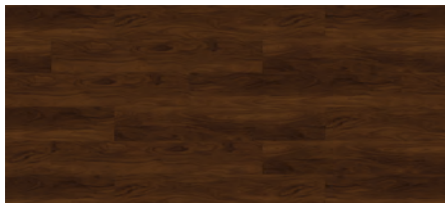
Acacia | Blond

NLG-6110



Acacia | Brown

NLG-6111



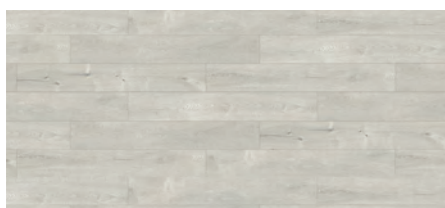
Restaurant | Acacia NLG-6110

Ecolay+ Plank

Dimension | 180 x 1,201mm

Village Ash | White

NLP-4501



Village Ash | Golden

NLP-4502



Elegant Oak | Blond

NLP-5511



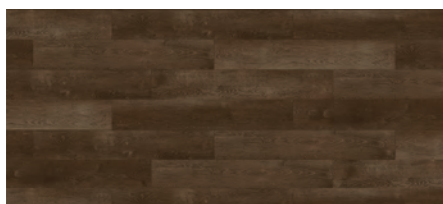
Elegant Oak | Grey

NLP-6901



Heritage Oak | Brown

NLP-6902



Elegant Oak | Grey

NLP-5510



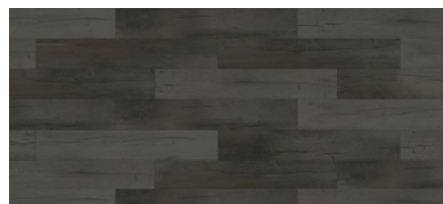
Antique Elm | Golden

NLP-6601



Antique Elm | Grey

NLP-6602





Ecolay+ Tile

Unique size options of concrete and stone tile bringing a sense of elegance

Dimension :

914.4 X 914.4mm / 600 X 600mm

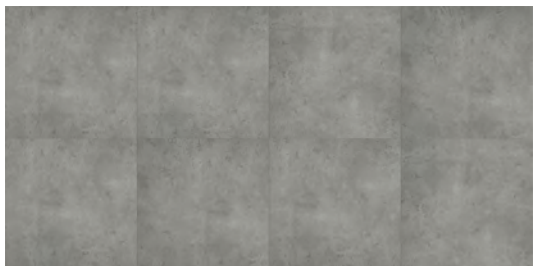
Total Thickness : 5mm

Grande Ecolay+ Tile

Dimension | 914.4 x 914.4mm

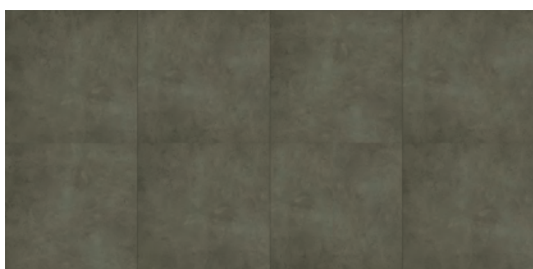
Urban Concrete | Light Grey

NLI-1010



Urban Concrete | Dark Grey

NLI-1011



Restaurant | Urban Concrete NLI-1011

Fresco | Beige

NLI-2301



Fresco | Grey

NLI-2302



Ecolay+ Tile

Dimension | 600 x 600mm



Art Gallery & Museum | Canvas NLI-2130

Canvas | Grey

NLI-2130



Canvas | Cocoa

NLI-2131





Place, Tap, Done

Proven loose-lay system installed in global market mainly for heavy commercial installation with its unique structure of unparalleled dimensional stability and unique grande size

ECOLOCK+

EASIEST & STRONGEST GLUELESS LVT

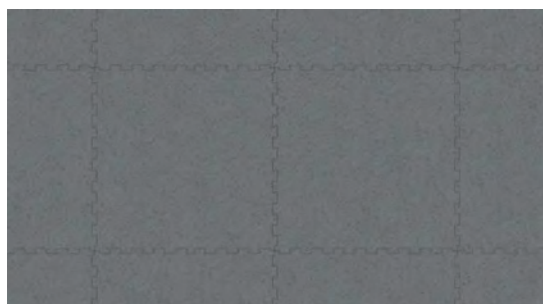
Grande Puzzle Tile

Dimension | 914.4 x 914.4mm



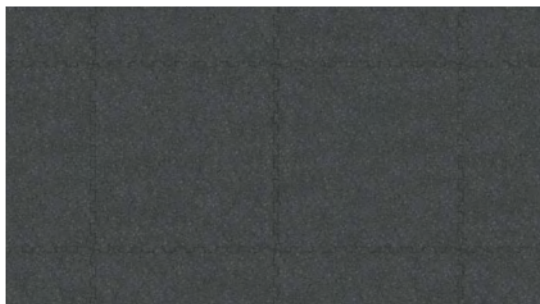
Puzzle | Grey

NKI-2560



Puzzle | Dark

NKI-2561



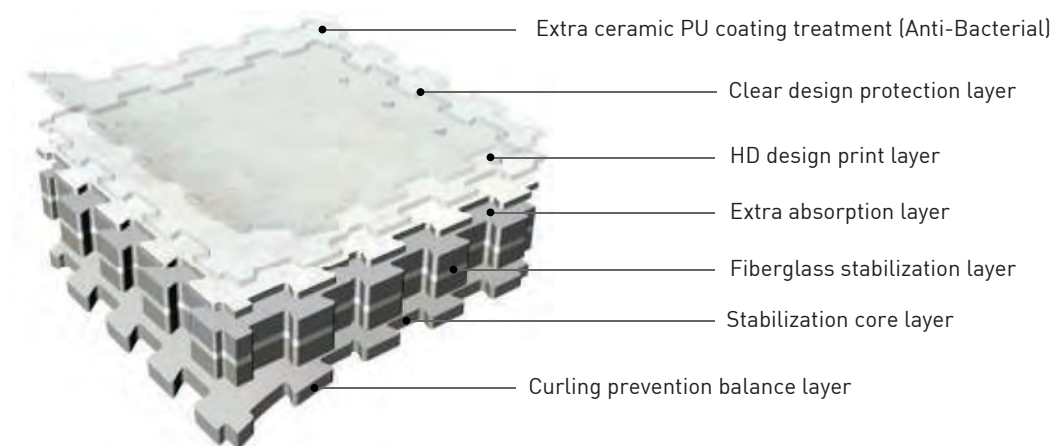
ECOLOCK⁺ Difference

With NOX Ecotecture® Technology

Nox corporation, one of the world-largest LVT manufacturers, traces its roots to chemical engineering with expertise in core components of LVT flooring for more than 495 years. Its NOX ECOTECTURE® TECHNOLOGY is the foundation of ECOLOCK⁺ innovation, providing the most stable and eco-friendly products.

Proven innovation of ECOLOCK⁺

Distinguished NOX Ecotecture® Multi-Layer Property ensures the unparalleled dimensional stability and extra sound absorption of ECOLOCK⁺



Advantages of ECOLOCK⁺



Inter-locking syste for easy installation and unique design



Ultra water-resistant



Superior dimensional stability with



Suitable for heated floor



Easy to install, replace and remove



Easier maintenance than traditional laminated wood and natural stone flooring



Silent and soft floor



Certified low VOCs and non-phthalate technology



100% recyclable

Installation Guidelines

- Prior to installation, the subfloor must be heated for -14 days if heating is available, and if not, allow sufficient time to dry out completely.
- Room temperature must maintained at 18°C or higher before and during installation.
- The flooring must be allowed to acclimate in the room to be installed for a minimum of 24 hrs. and be stacked flat on the floor to avoid bending the floor.
- Prior to installation, please ensure that both color and lot# are the same.
- When installing, be sure to keep dust, dirt or foreign particles away from the locking strip.

Maintenance

- Regularly sweep floor to remove sand and grit that can scratch the floor.
- For best results, use only water with a mop. Avoid flooding the floor with too much water.
- For heavily soiled areas, use a neutral ph balanced floor center.
- Use caution when lifting boxes.
- Promptly remove any standing water to avoid slippage.
- Keep on the flat surface to keep it from warping.

Size & Packing

	Size (mm)	Thickness (mm)	Pcs/BOX	m²/BOX	Kg/m²
LOOM+	500 x 500	3	16 pcs/Box	4m²	5.0
		5	10 pcs/Box	2.5m²	8.2
	1000 x 500	3	8 pcs/Box	4m²	5.0
		5	5 pcs/Box	2.5m²	8.2
ECOCLICK+	185 x 1212	5	8	1.79	
	235 x 1505		6	2.12	
	304.8 x 609.6		10	1.86	
	457.2 x 914.4		6	2.56	
ORCHID+	152.4 x 914.4	2.5	24	3.34	
	180 x 1200		15	3.24	
	186 x 940		19	3.32	
	304.8 x 609.6		18	3.34	
ECOLAY+	457.2 x 457.2	5	16	3.34	
	180 x 1201		10	2.16	
	235 x 1505		6	2.12	
	600 x 600		6	2.16	
	914.4 x 914.4	36" x 36"	3	2.51	

Size & Packing

Test Item	Standard	LOOM+
Level of use	EN 685	33
Dimensional stability	ISO 23999/ EN434 EN986	≤1.10 [Norm:≤ 0.25%] passed
Abrasion group	NA	NA
Castor chair resistance	EN 985	No damage
Squareness & Straightness	ISO 24342	No deviation
	ASTM F2055	≤ 0.01 in
Residual indentation	ISO 24343-1	≤ 0.1mm
	ASTM F1914	< 8%
Impact sound insulation	ISO 10140-3	9dB
Light fastness	ISO 105-B02	≥ 6
Slip Resistance	DIN 51130	R10
	EN 13893	DS
Resistance to chemicals	ISO 26987	No Defects
	ASTM F925	No Defects
Thermal resistance	ISO 8302	0.02m²K/W
Curling after exposure to heat	NA	NA
Fire resistance	EN 13501	Bfl-s1
Flexibility	ISO 24344	Passed
Body Voltage	EN 1815	Fulfilled
Resistance against staining	NA	NA
Underfloor heating suitability	EN 12524	Suitable
Formaldehyde group	NA	NA
Indoor air quality	NA	Low VOC
Fraying	EN 1814	Frayproof

Standard	ECOCLICK+	ORCHID+	ECOLAY+/ECOLOCK+
EN 685	23 / 33 / 42	23 / 33	23 / 33 / 42
ISO 23999 / EN 434	≤1.10 [Norm:≤ 0.25%]	≤1.10 [Norm:≤ 0.25%]	≤1.10 [Norm:≤ 0.25%]
EN 660-2	Class T	Class T	Class T
EN 425	No damage	No damage	No damage
ISO 243342	≤ 400mm: ≤ 0.25mm	≤ 400mm: ≤ 0.25mm	≤ 400mm: ≤ 0.25mm
	≤ 400mm: ≤ 0.35mm	≤ 400mm: ≤ 0.35mm	≤ 400mm: ≤ 0.35mm
ASTM F2055	≤ 0.01 in	≤ 0.01 in	≤ 0.01 in
EN 433	≤ 0.1mm	≤ 0.1mm	≤ 0.1mm
ASTM F1914	≤ 8%	≤ 8%	≤ 8%
ISO 10140-3	9dB	6dB	9dB
ISO 105-B02	≥ 6	≥ 6	≥ 6
DIN 51130	R10	R9	R10
EN 13893	DS	DS	DS
ISO 26987	No Defects	No Defects	No Defects
ASTM F925	No Defects	No Defects	No Defects
ISO 8302	0.01m²K/W	0.01m²K/W	0.01m²K/W
ISO 23999	≤ 2mm	≤ 2mm	≤ 2mm
EN 13501-1	Bfl-s1	Bfl-s1	Bfl-s1
ISO 24344	Passed	Passed	Passed
ASTM F137	Passed	Passed	Passed
EN 1815	< 2kV	< 2kV	< 2kV
ISO 26987	Passed	Passed	Passed
EN 12524	Suitable	Suitable	Suitable
EN 717-1	E1	E1	E1
NA	Low VOC	Low VOC	Low VOC
NA	NA	NA	NA

Standard	ECOCLICK+	ORCHID+	ECOLAY+/ECOLOCK+
EN 685	23 / 33 / 42	23 / 33	23 / 33 / 42
ISO 23999 / EN 434	≤1.10 [Norm:≤ 0.25%]	≤1.10 [Norm:≤ 0.25%]	≤1.10 [Norm:≤ 0.25%]
EN 660-2	Class T	Class T	Class T
EN 425	No damage	No damage	No damage
ISO 243342	≤ 400mm: ≤ 0.25mm	≤ 400mm: ≤ 0.25mm	≤ 400mm: ≤ 0.25mm
	≤ 400mm: ≤ 0.35mm	≤ 400mm: ≤ 0.35mm	≤ 400mm: ≤ 0.35mm
ASTM F2055	≤ 0.01 in	≤ 0.01 in	≤ 0.01 in
EN 433	≤ 0.1mm	≤ 0.1mm	≤ 0.1mm
ASTM F1914	≤ 8%	≤ 8%	≤ 8%
ISO 10140-3	9dB	6dB	9dB
ISO 105-B02	≥ 6	≥ 6	≥ 6
DIN 51130	R10	R9	R10
EN 13893	DS	DS	DS
ISO 26987	No Defects	No Defects	No Defects
ASTM F925	No Defects	No Defects	No Defects
ISO 8302	0.01m²K/W	0.01m²K/W	0.01m²K/W
ISO 23999	≤ 2mm	≤ 2mm	≤ 2mm
EN 13501-1	Bfl-s1	Bfl-s1	Bfl-s1
ISO 24344	Passed	Passed	Passed
ASTM F137	Passed	Passed	Passed
EN 1815	< 2kV	< 2kV	< 2kV
ISO 26987	Passed	Passed	Passed
EN 12524	Suitable	Suitable	Suitable
EN 717-1	E1	E1	E1
NA	Low VOC	Low VOC	Low VOC
NA	NA	NA	NA

ABOUT US:



Builder's Choice Inc. (BCI) is a privately held company formed in November of 2003, primarily engaged in the importation, distribution, marketing and sales of premium flooring solutions. Since its establishment, BCI has been delivering innovation and creativity as the trendsetter in the PVC flooring solutions industry in the Philippines. BCI is the exclusive distributor of Hyundai Flooring and a proud member of The WOW Group.



The WOW Group is mainly engaged in importing, distributing, marketing, sales and services. The group offers a diverse portfolio of premium products from established brands sourced around the world. Targeting the sectors of Entertainment, Energy & Environment, as well as Food & Wellness; these have been chosen to ensure that the Filipinos get better quality products, backed by unrivalled service.

Our Philosophy is simply that,
"The Filipino Deserves Better!"

OUR BRANDS:

Entertainment:



SENNHEISER



SONY



MA

ROBE



audison HERTZ

Energy & Environment:



HAEMA



Food & Wellness:



Global Flooring Innovation Leader



Visit our homepage



Exclusive Philippine Distributor:



📍 Showroom and Office: 1081 EDSA Balintawak, Quezon City
☎ (632) 362-1016, (632) 362-2540 loc 209 🖨 (632) 330-3589
🌐 www.builderschoice.com.ph 📘 BuildersChoiceInc

A member of:

