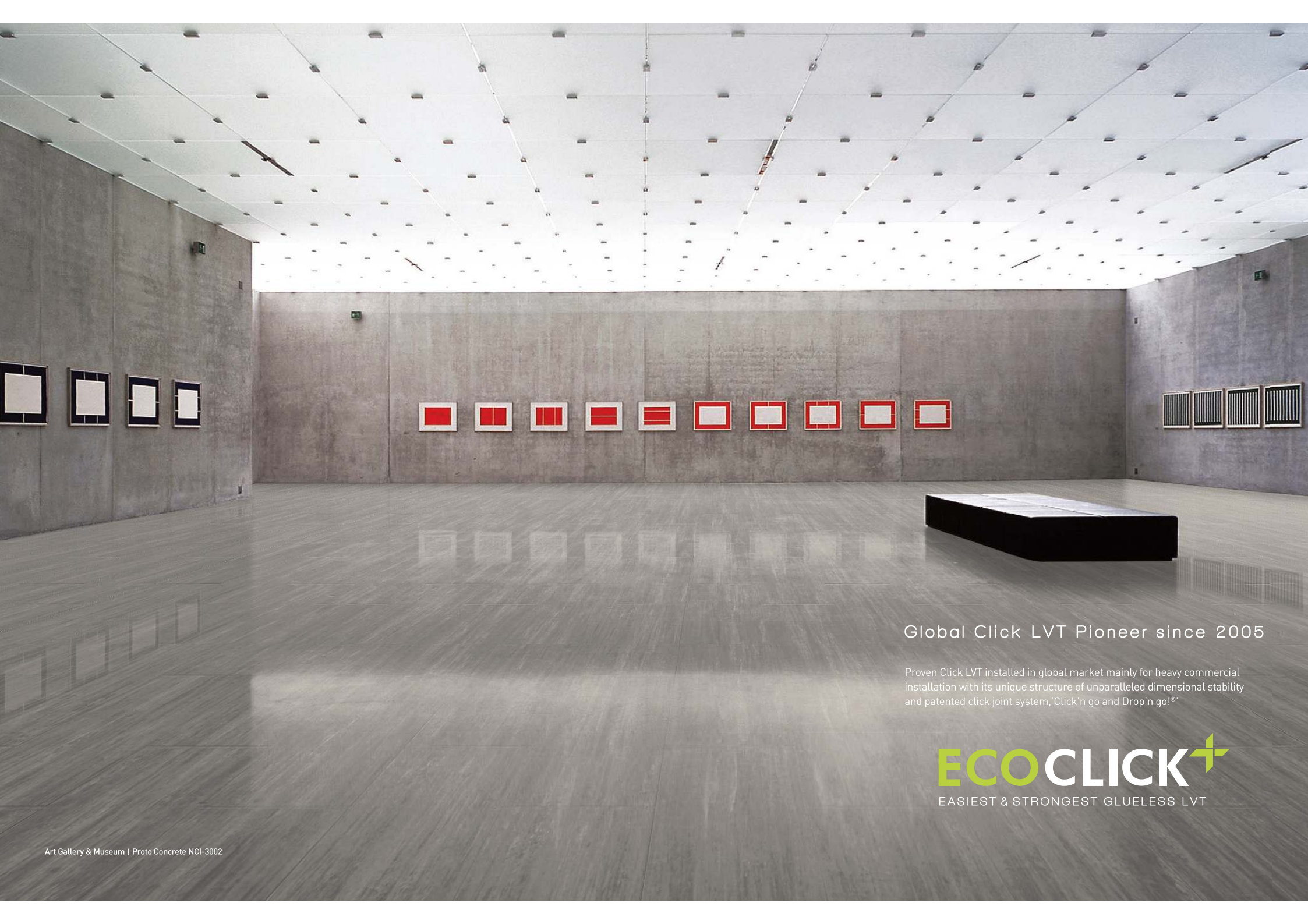


ECOCLICK⁺

EASIEST & STRONGEST GLUELESS LVT

Global Click LVT Pioneer since 2005



Global Click LVT Pioneer since 2005

Proven Click LVT installed in global market mainly for heavy commercial installation with its unique structure of unparalleled dimensional stability and patented click joint system, 'Click'n go and Drop'n go!®'

ECOCLICK+
EASIEST & STRONGEST GLUELESS LVT

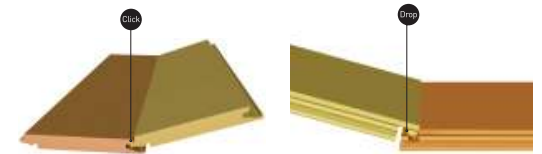
ECOCLICK+ Difference

With NOX Ecotecture® Technology

NOX corporation, one of the world-largest LVT manufacturers, traces its roots to chemical engineering with expertise in core components of LVT flooring for more than 45 years. Its NOX ECOTECHTURE® TECHNOLOGY is the foundation of ECOCLICK+ innovation, providing the most stable and eco-friendly products.

Proven innovation of ECOCLICK+ since 2005

1. Unique patented Click'n go and Drop'n go!® click system
-The easiest and strongest click system in the market



2. Distinguished NOX Ecotecture® Multi-Layer Property

- Ensures the unparalleled dimensional stability and extra sound absorption of ECOCLICK+

Extra ceramic PU coating treatment
(Anti-Bacterial)

Clear design protection layer

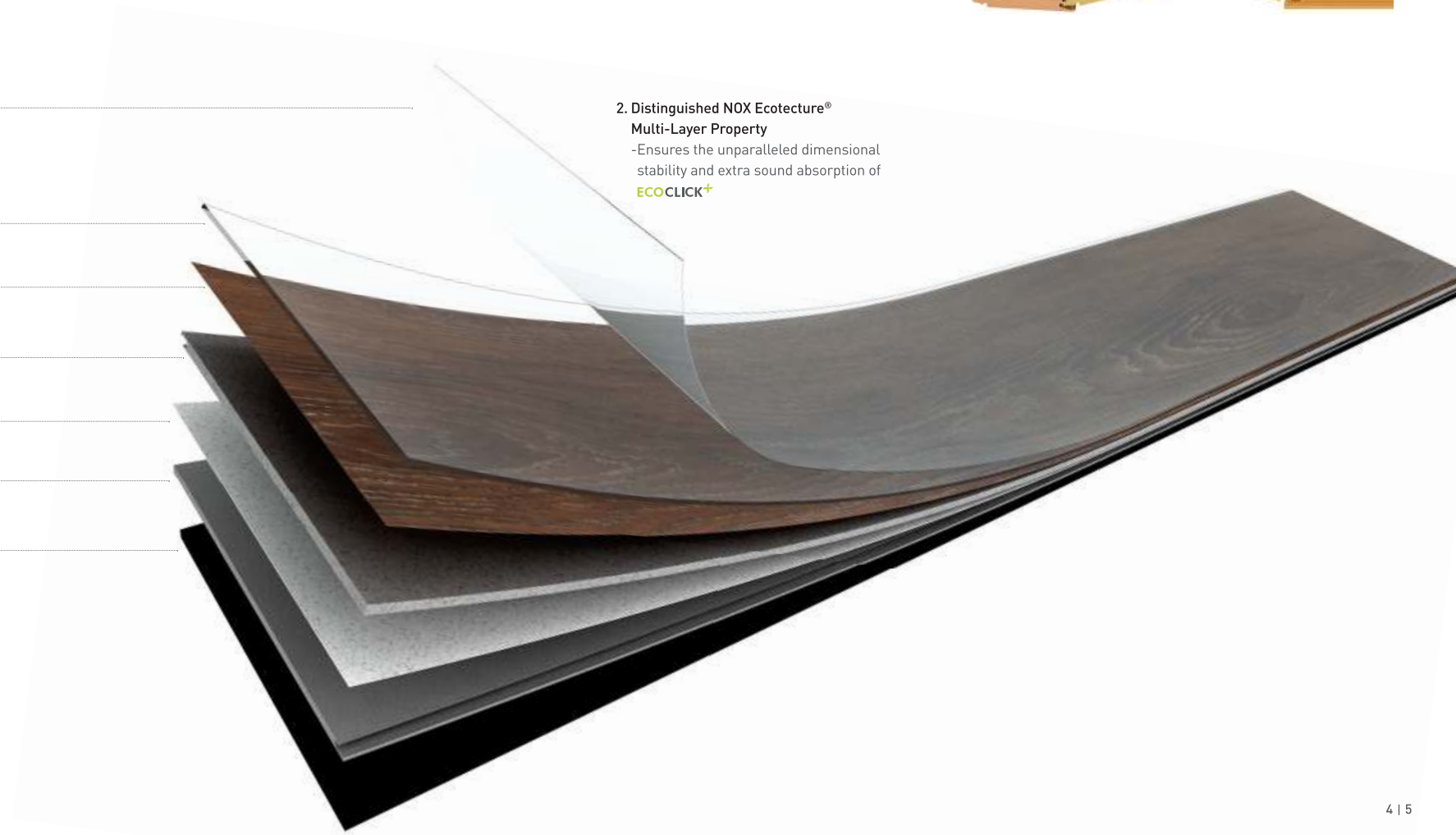
HD design print layer

Extra stabilization core layer

Fiberglass stabilization layer

Stabilization core layer

Curling prevention balance layer



Advantages of ECOCLICK+



Most diverse click sizes
- 2 plank click sizes including grande plank size
- 2 tile sizes including grande tile size



Superior dimensional stability with
- NOX Ecotecture® Multi-Layer Property
- Fiberglass stabilization layer



Unique patented Click'n go and Drop'n go!® click system
- The easiest and strongest click system in the market



Easy to install, replace, and remove



Silent and soft floor



Certified low VOCs and non-phthalate technology



100% recyclable



Ultra water-resistant



Suitable for heated floor



Easier maintenance than traditional laminated wood and natural stone flooring



HD design

The first in LVT, 'Built-In-Grout' click system of ECOCLICK+

Just click and the natural grout line will appear, allowing for the natural elegance of stone and ceramic tiles to shine. ECOCLICK+ can be supplied with 'built-in' grout type according to your request.



Ecoclick+ Plank

Grande size of wood plank creating a truly natural and distinctive look

Dimension : 235 X 1,505mm / 185 X 1,212mm
Total Thickness : 5mm





Restaurant | Grand Oak NCG-6311

Grande Ecoclick+ Plank

• Dimension | 235 x 1,505mm

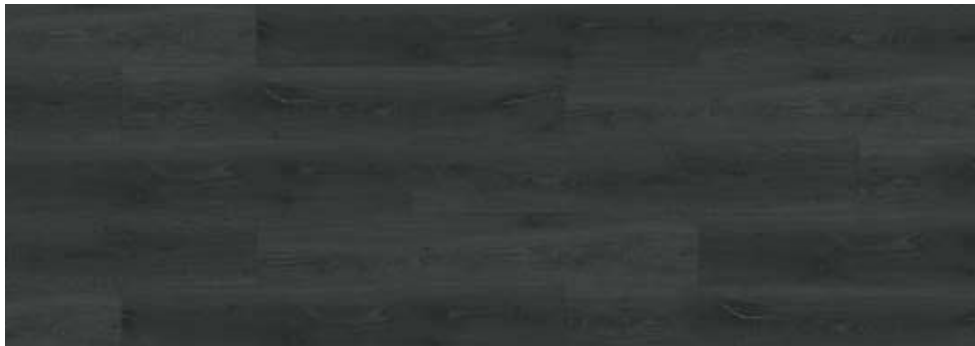
Grand Oak | White

NCG-6310



Grand Oak | Black

NCG-6311





Hospitality & Health care | European Oak NCG-5121

Ecoclick+ Plank

European Oak | Golden

NCG-5120



• Dimension | 235 x 1,505

European Oak | Brown

NCG-5121



Ecoclick+ Plank

• Dimension | 185 x 1,212mm

Vintage Pear | White

NCP-6510

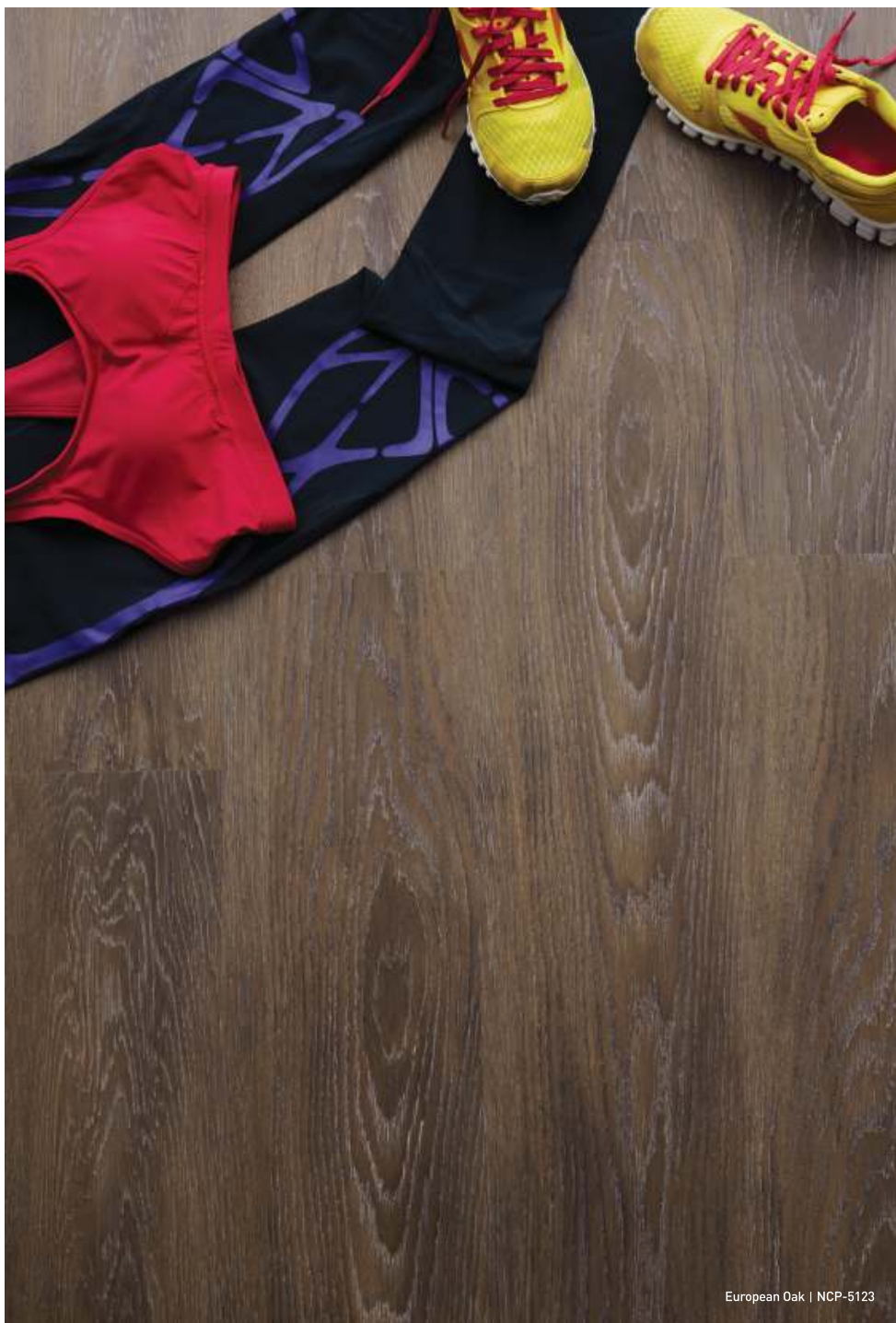


Vintage Pear | Natural

NCP-6511



Vintage Pear | NCP-6510



European Oak | NCP-5123

Ecoclick+ Plank

• Dimension | 185 x 1,212mm

European Oak | Golden

NCP-5122



European Oak | Maroon

NCP-5123



Ecoclick+ Plank

• Dimension | 185 x 1,212mm

Hickory | Brown [Natural Embossed In Register]

NCP-6430



Hickory | Brown [Natural Embossed In Register]

NCP-6431



Hickory | NCP-6431



Education & Libraries | Western Oak NCP-6710

Ecoclick+ Plank

• Dimension | 185 x 1,212mm

Western Oak | Grey

NCP-6710



Western Oak | Brown

NCP-6711



Ecoclick+ Tile

Unique size options of concrete and stone tile with a natural delicacy

Dimension : 304.8 X 609.6mm / 457.2 X 914.4mm
Total Thickness : 5mm



Ecoclick+ Tile

• Dimension | 304.8 x 609.6mm

Proto Concrete | White

NCI-3001



Proto Concrete | Grey

NCI-3002



Proto Concrete | NCI-3002



Retail | Sand NCI-1540

Ecoclick+ Tile

Sand | Grey

NCI-1540



• Dimension | 457.2 x 914.4mm

Sand | Dark

NCI-1541





Hotel & Resort | Western Oak NCP-6711



Ecoclick+
Plank



Grand Oak | White



Grand Oak | Black



European Oak | Golden



European Oak | Brown



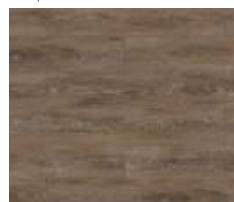
Vintage Pear | White



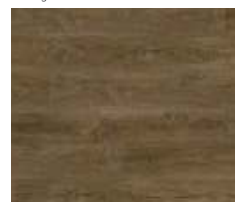
Vintage Pear | Natural



European Oak | Golden

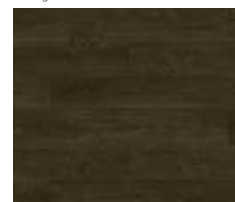


European Oak | Maroon



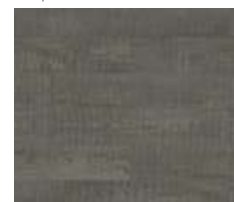
Hickory | Brown

[Natural Embossed
In Register]

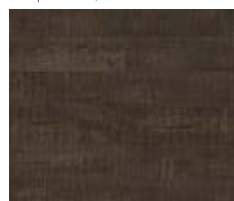


Hickory | Brown

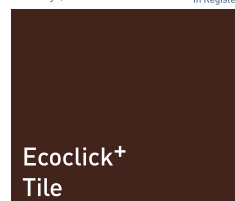
[Natural Embossed
In Register]



Western Oak | Grey



Western Oak | Brown



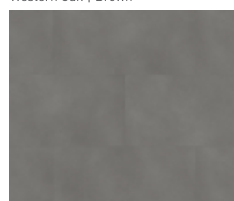
Ecoclick+
Tile



Proto Concrete | White



Proto Concrete | Grey



Sand | Grey

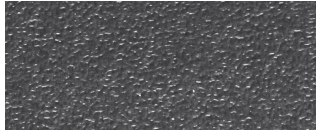


Sand | Dark

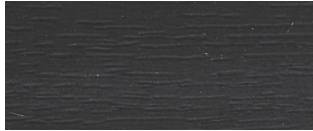
Diverse Design Solution

Surface Embossing

ECOCLICK+ with 7 different surface embossing textures including natural Embossed-In-Register



I-03 Sand structure



I-14 Wood structure



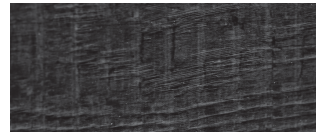
I-19 Rustic wood structure



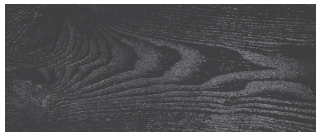
I-23 Hand-planed structure



I-35 Design wood structure



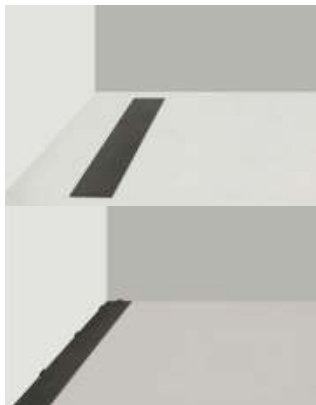
I-43 Classic saw-marked structure



P-33 natural Embossed-in-Register : Wood

Easy & Quick Installation

1. Unpack



2. Angle & Click



3. Drop & Click



Technical Information

Installation Guidelines

- Prior to installation, the subfloor must be heated for -14 days if heating is available, and if not, allow sufficient time to dry out completely.
- Room temperature must be maintained at 18°C or higher before and during installation.
- The flooring must be allowed to acclimate in the room to be installed for a minimum of 24 hours and be stacked flat on the floor to avoid bending the floor.
- Prior to installation, please ensure that both color and lot# are the same.
- When installing **ECOCLICK+**, be sure to keep dust, dirt or foreign particles away from the locking strip.

Maintenance

- Regularly sweep floor to remove sand and grit that can scratch floor.
- For best results, use only water with a mop. Avoid flooding the floor with too much water.
- For heavily soiled areas, use a neutral ph balanced floor cleaner.
- Use caution when lifting boxes.
- Promptly remove any standing water to avoid slippage.
- Keep **ECOCLICK+** on the flat surface to keep it from warping

Size & Packing

Size (mm)		Thickness(mm)	Pcs / BOX	m ² / BOX
185 x 1212		5	8	1.79
235 x 1505			6	2.12
304.8 x 609.6	12" x 24"		10	1.86
457.2 x 914.4	18" x 36"		6	2.56

Test Result

Test Item	Standard	Ecoclick+
Level of use	EN 685	23 / 33 / 42
Dimensional stability	ISO 23999 / EN 434	≤0.10% (Norm: ≤0.25%)
Abrasion group	EN 660-2	Class T
Castor chair resistance	EN 425	No damage
Squareness & Straightness	ISO 24342	≤ 400mm : ≤0.25mm >400mm : ≤0.35mm
	ASTM F2055	≤ 0.01 in
Residual indentation	EN 433 ASTM F1914	≤ 0.1mm <8%
Impact sound insulation	ISO 10140-3	9dB
Light fastness	ISO 105-B02	≥ 6
Slip resistance	EN 13893	DS
	DIN51130	R10
Resistance to chemicals	ISO 26987	No Defects
	ASTM F925	No Defects
Thermal resistance	ISO 8302	0.01m ² K/W
Curling after exposure to heat	ISO 23999	≤ 2mm
Fire resistance	EN 13501-1	Bfl -s1
	ISO 24344	Passed
Flexibility	ASTM F137	Passed
	EN 1815	<2kV
Body Voltage	EN 1815	<2kV
Resistance against staining	ISO 26987	Passed
Underfloor heating suitability	EN 12524	Suitable
Formaldehyde group	EN 717-1	E1
Indoor air quality		Low VOC





Corporate Office

Yoonil Bldg. 5F, 336 Hyoryeong-ro,
Seocho-Gu, Seoul 137-865, Korea

Tel +82-2-520-7600

Fax +82-2-598-9674

Global LVT Centers

Bongsan Factory
Godeok Factory
Deoksan Factory
Choongnam, Korea

www.noxprime.com

E-Mail | info@noxprime.com



NOX Corp.

Visit www.noxprime.com for the detailed installation,
maintenance guides and technical information.