

# ECOLAY+

EASIEST & STRONGEST GLUELESS LVT



No Stick, No Click, Just Lay



## No Stick, No Click, Just Lay

Proven loose-lay system installed in global market mainly for heavy commercial installation with its unique structure of unparalleled dimensional stability, diverse designs, and size options

**ECOLAY+**  
EASIEST & STRONGEST GLUELESS LVT

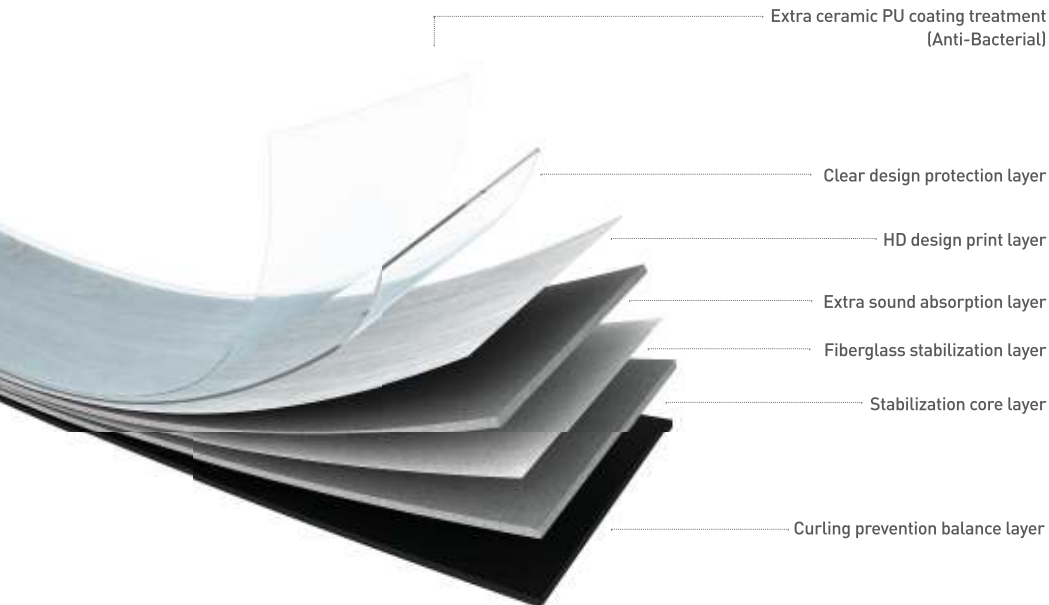
# ECOLAY+ Difference

## With NOX Ecotecture® Technology

NOX corporation, one of the world-largest LVT manufacturers, traces its roots to chemical engineering with expertise in core components of LVT flooring for more than 45 years. Its NOX ECOTECTURE® TECHNOLOGY is the foundation of ECOLAY+ innovation, providing the most stable and eco-friendly products.

## Proven innovation of ECOLAY+ since 2003

Distinguished NOX Ecotecture® Multi-Layer Property ensures the unparalleled dimensional stability and extra sound absorption of ECOLAY+.

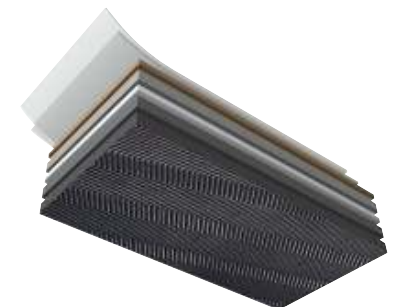


## Advantages of ECOLAY+

-  **Most diverse sizes**
  - 2 plank sizes including grande plank size
  - 2 tile sizes including grande tile size
-  **Superior dimensional stability with**
  - NOX Ecotecture® Multi-Layer Property
  - Fiberglass stabilization layer
-  **Easy to install, replace, and remove**
-  **Silent and soft floor**
-  **Certified low VOCs and non-phthalate technology**
-  **100% recyclable**
-  **Ultra water-resistant**
-  **Suitable for heated floor**
-  **Easier maintenance than traditional laminated wood and natural stone flooring**
-  **HD design**

## ECOLAY+ Non-skid backing

ECOLAY+ can be supplied with non-skid backing type according to your request.



## Ecolay+ Plank

Grande size of wood plank with rich and versatile look

Dimension : 235 X 1,505mm / 180 X 1,201mm  
Total Thickness : 5mm



# Grande Ecolay+ Plank

• Dimension | 235 x 1,505mm

Santana Oak | Grey

NLG-6220



Santana Oak | Brown

NLG-6221



Acacia | Blond

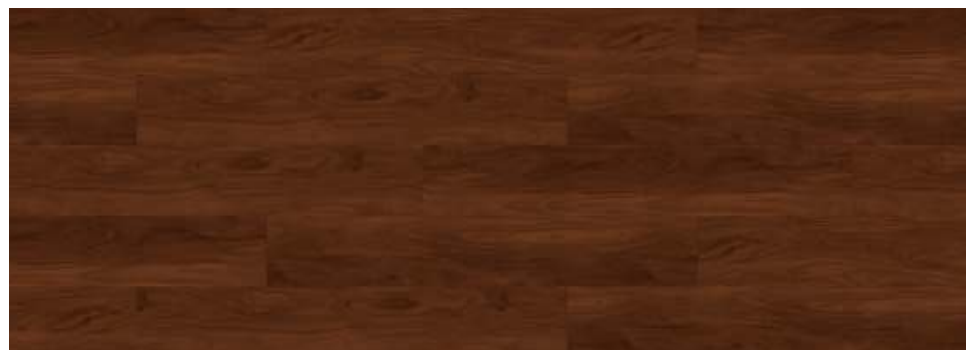
NLG-6110



Restaurant | Acacia NLG-6110

Acacia | Brown

NLG-6111





Hospitality & Health care | Village Ash NLP-4501

## Ecolay+ Plank

• Dimension | 180 X 1,201mm

Village Ash | White

NLP-4501



Village Ash | Golden

NLP-4502



# Ecolay+ Plank

• Dimension | 180 X 1,201mm

Heritage Oak | Grey

NLP-6901



Heritage Oak | Brown

NLP-6902



Heritage Oak | NLP-6901

# Ecolay+ Plank

• Dimension | 180 X 1,201mm

Elegant Oak | Blond

NLP-5511



Elegant Oak | Grey

NLP-5510



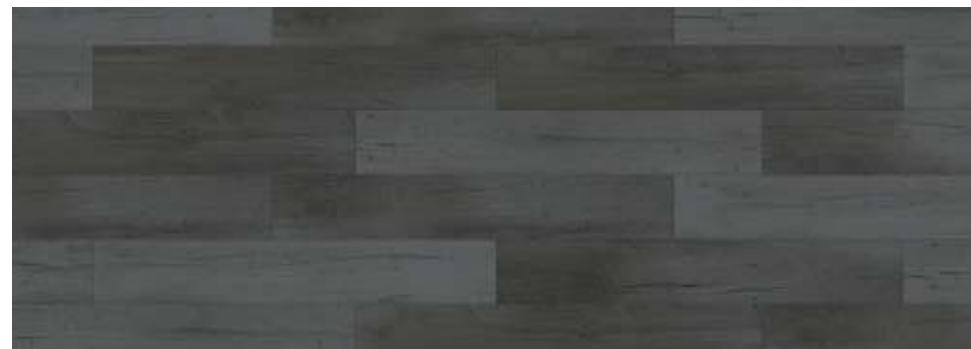
Antique Elm | Golden

NLP-6601



Antique Elm | Grey

NLP-6602





## Ecolay+ Tile

Unique size options of concrete and stone tile bringing a sense of elegancy

Dimension : 914.4 X 914.4mm / 600 X 600mm  
Total Thickness : 5mm





Restaurant | Urban Concrete NLI-1011

## Grande Ecolay+ Tile

• Dimension | 914.4 X 914.4mm

Urban Concrete | Light Grey

NLI-1010



Urban Concrete | Dark Grey

NLI-1011



## Grande Ecolay+ Tile

• Dimension | 914.4 X 914.4mm

Fresco | Beige

NLI-2301



Fresco | Grey

NLI-2302



Art Gallery & Museum | Fresco NLI-2302



Art Gallery & Museum | Canvas NLI-2130

## Ecolay+ Tile

Canvas | Grey

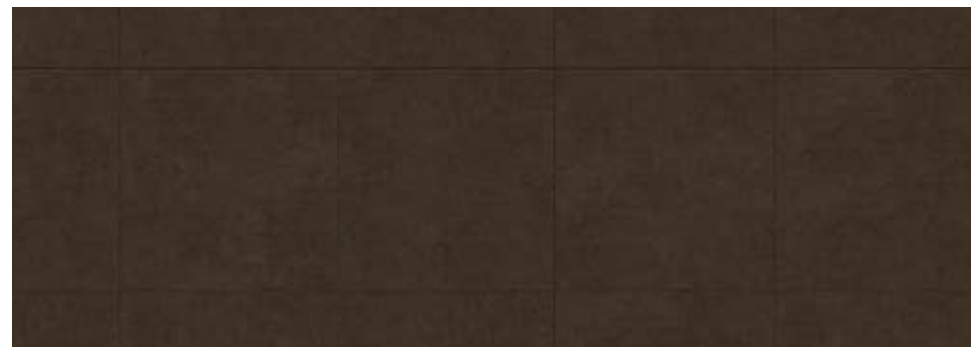
NLI-2130

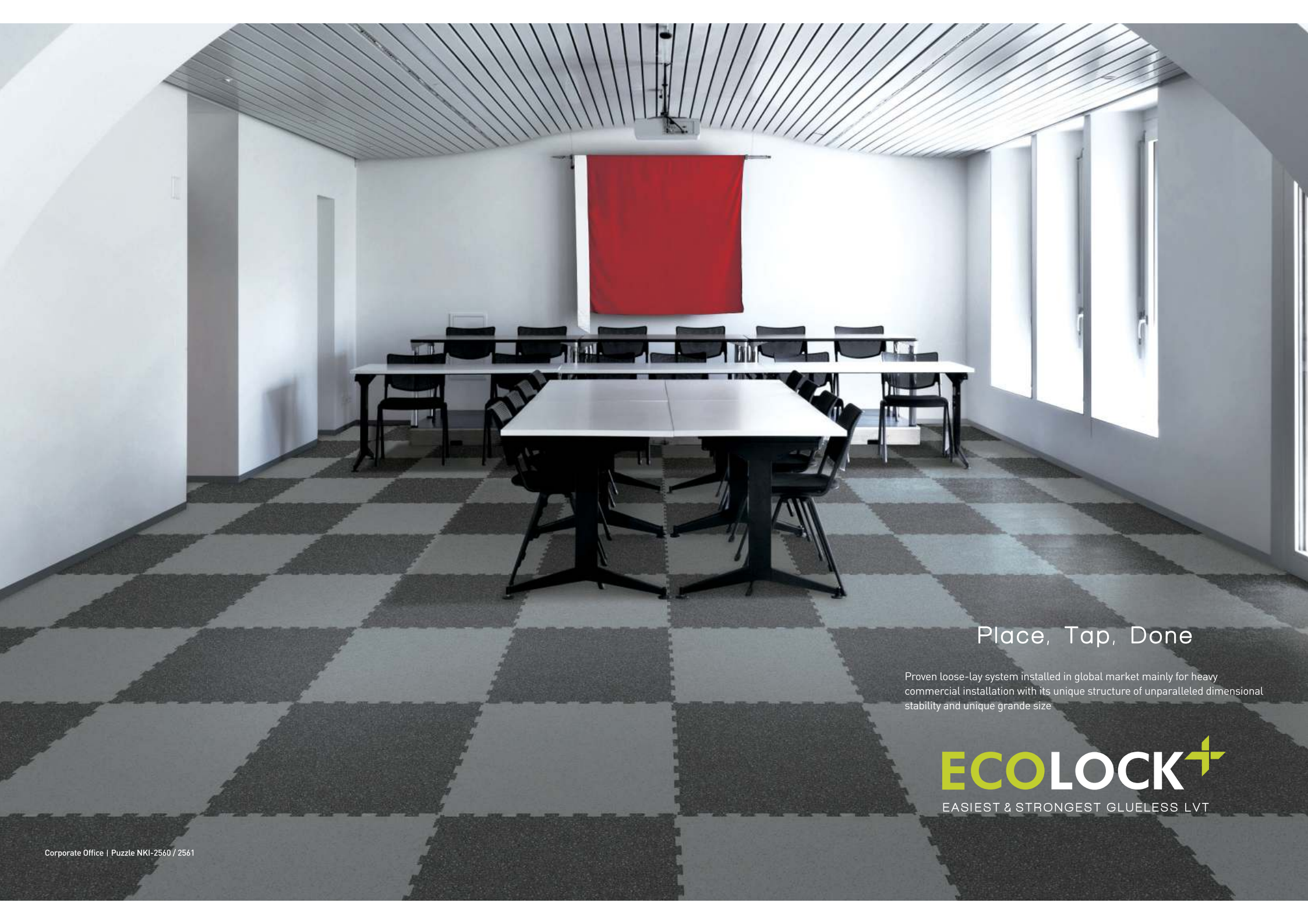


• Dimension | 600 x 600mm

Canvas | Cocoa

NLI-2131





## Place, Tap, Done

Proven loose-lay system installed in global market mainly for heavy commercial installation with its unique structure of unparalleled dimensional stability and unique grande size

**ECOLOCK+**  
EASIEST & STRONGEST GLUELESS LVT

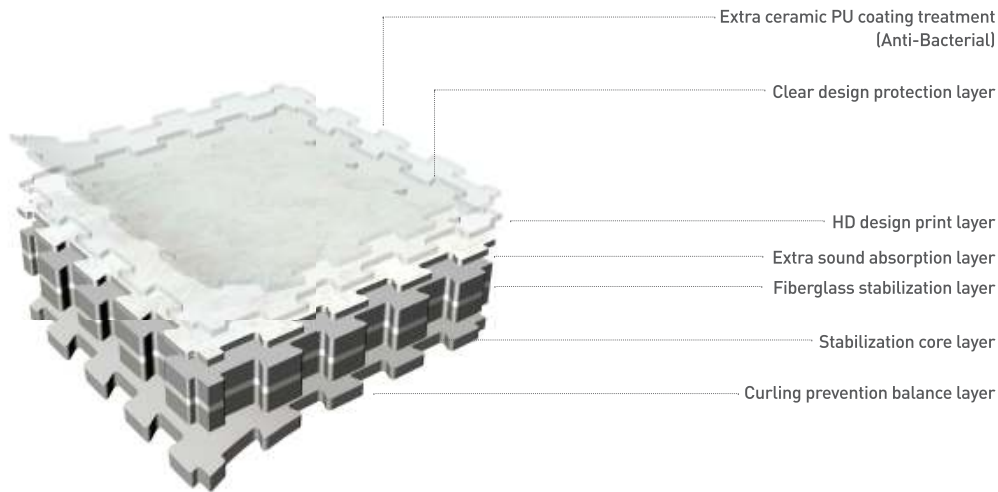
# ECOLOCK+ Difference

## With NOX Ecotecture® Technology

NOX corporation, one of the world-largest LVT manufacturers, traces its roots to chemical engineering with expertise in core components of LVT flooring for more than 45 years. Its NOX ECOTECTURE® TECHNOLOGY is the foundation of ECOLOCK+ innovation, providing the most stable and eco-friendly products.

## Proven innovation of ECOLOCK+

Distinguished NOX Ecotecture® Multi-Layer Property ensures the unparalleled dimensional stability and extra sound absorption of ECOLOCK+



## Advantages of ECOLOCK+



Inter-locking system for easy installation and unique design



Superior dimensional stability with  
- NOX Ecotecture® Multi-Layer Property  
- Fiberglass stabilization layer



Easy to install, replace, and remove



Silent and soft floor



Certified low VOCs and non-phthalate technology



100% recyclable



Ultra water-resistant



Suitable for heated floor



Easier maintenance than traditional laminated wood and natural stone flooring



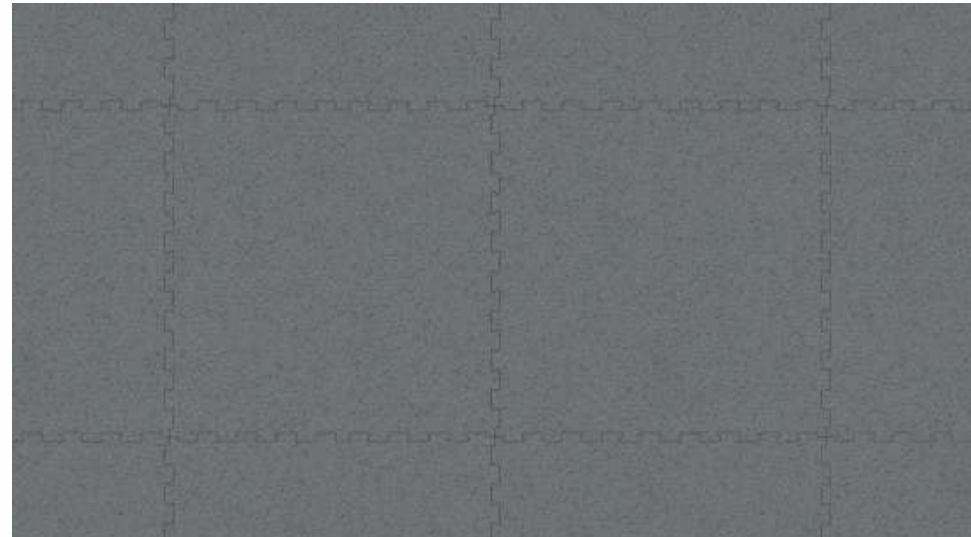
Retail | Puzzle NKI-2560 / 2561

## Grande Puzzle Tile

• Dimension | 914.4 x 914.4mm

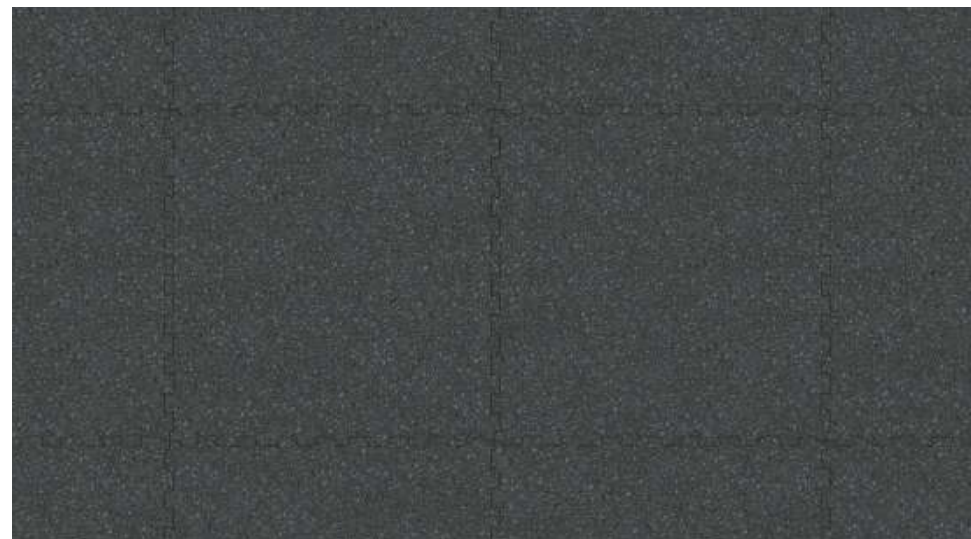
Puzzle | Grey

NKI-2560



Puzzle | Dark

NKI-2561

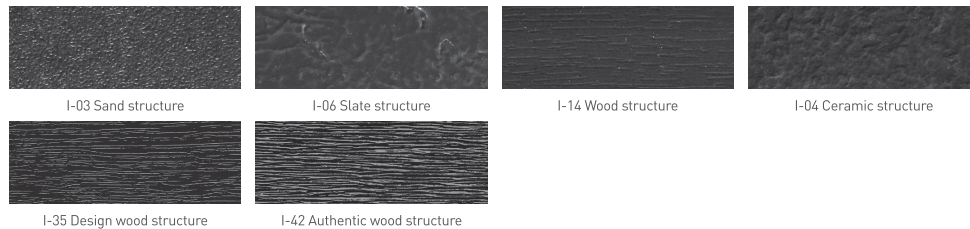


## Ecolay+ Plank



## Surface Embossing

ECOLAY+ with 5 different surface embossing



## Technical Information

### Installation Guidelines

- Prior to installation, the subfloor must be heated for -14 days if heating is available, and if not, allow sufficient time to dry out completely.
- Room temperature must be maintained at 18°C or higher before and during installation.
- The flooring must be allowed to acclimate in the room to be installed for a minimum of 24 hours and be stacked flat on the floor to avoid bending the floor.
- Prior to installation, please ensure that both color and lot# are the same.
- When installing ECOLAY+, be sure to keep dust, dirt or foreign particles away from the locking strip.

### Maintenance

- Regularly sweep floor to remove sand and grit that can scratch floor.
- For best results, use only water with a mop. Avoid flooding the floor with too much water.
- For heavily soiled areas, use a neutral ph balanced floor cleaner.
- Use caution when lifting boxes.
- Promptly remove any standing water to avoid slippage.
- Keep ECOLAY+ on the flat surface to keep it from warping.

### Size & Packing

Size (mm)	Thickness(mm)	Pcs / BOX	m <sup>2</sup> / BOX
180 x 1201	5	10	2.16
235 x 1505		6	2.12
600 x 600		6	2.16
914.4 x 914.4		3	2.51
	36" x 36"		

### Test Result

Test Item	Standard	Ecolay+ / Ecolock+
Level of use	EN 685	23 / 33 /42
Dimensional stability	ISO 23999 / EN 434	≤0.10% [ Norm: ≤0.25% ]
Abrasion group	EN 660-2	Class T
Castor chair resistance	EN 425	No damage
Squareness & Straightness	ISO 24342	≤ 400mm : ≤0.25mm >400mm : ≤0.35mm
	ASTM F2055	≤ 0.01 in
Residual indentation	EN 433	≤ 0.1mm
	ASTM F1914	<8%
Impact sound insulation	ISO 10140-3	9dB
Light fastness	ISO 105-B02	≥ 6
Slip resistance	EN 13893	DS
	DIN51130	R10
Resistance to chemicals	ISO 26987	No Defects
	ASTM F925	No Defects
Thermal resistance	ISO 8302	0.01m <sup>2</sup> K/W
Curling after exposure to heat	ISO 23999	≤ 2mm
Fire resistance	EN 13501-1	Bfl -s1
Flexibility	ISO 24344	Passed
	ASTM F137	Passed
Body Voltage	EN 1815	<2kV
Resistance against staining	ISO 26987	Passed
Underfloor heating suitability	EN 12524	Suitable
Formaldehyde group	EN 717-1	E1
Indoor air quality		Low VOC







---

### **Corporate Office**

Yoonil Bldg. 5F, 336 Hyoryeong-ro,  
Seocho-Gu, Seoul 137-865, Korea

Tel +82-2-520-7600

Fax +82-2-598-9674

### **Global LVT Centers**

Bongsan Factory  
Godeok Factory  
Deoksan Factory  
Choongnam, Korea

---

**[www.noxprime.com](http://www.noxprime.com)**

E-Mail | [info@noxprime.com](mailto:info@noxprime.com)



**NOX Corp.**

Visit [www.noxprime.com](http://www.noxprime.com) for the detailed installation,  
maintenance guides and technical information.