

CRESCENDO

Premium Flooring Collection



HYUNDAI

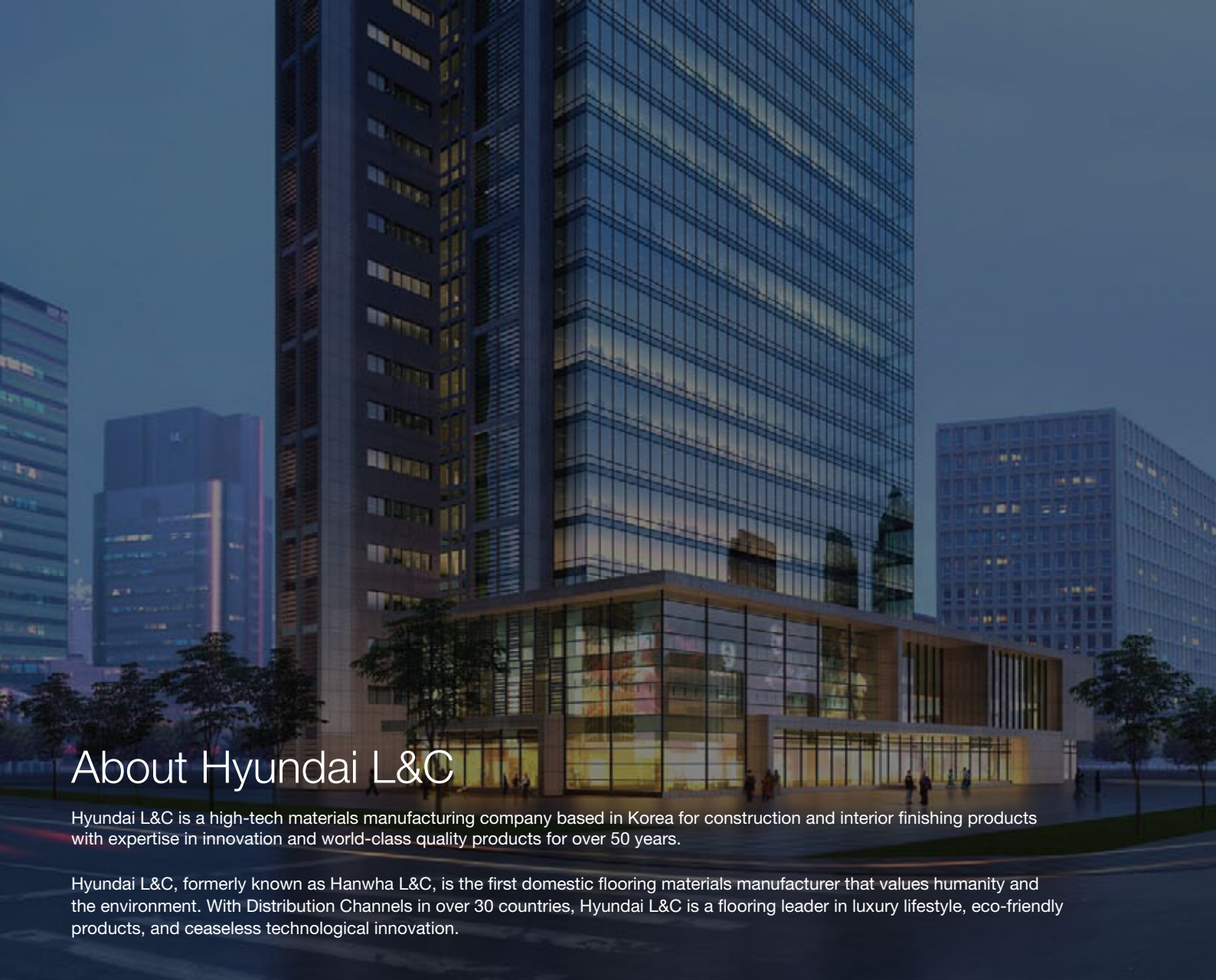
L & C

Contents

About Hyundai L&C	03
The Hyundai Advantage	04
Products	
Luxury Vinyl Tile	
Crescendo RVP	06
Crescendo Classic	
Classic Wood Planks	08
Classic Square 450, 500, 600	10
Crescendo Master	
Master Wood Planks	14
Master Square	16
Crescendo GoldTile SE	17
Vinyl Composite Tile	
Regent BIO	18
Deluxe Tile	19
Deluxe Gold / MVP / Conductive Tile	20
Vinyl Sheet	
Corona	21
Myeongga Original / Premium	22
Hwangsil Original / Premium	24
Sorigium	26
Specialty Flooring	
Carpet Tile	27
Nylon6 / PP Solid / Nylon / Dignity	28
Installation and Care Guide	32
Specification Table	33
Certifications	34
About Us	35



CRESCENDO



About Hyundai L&C

Hyundai L&C is a high-tech materials manufacturing company based in Korea for construction and interior finishing products with expertise in innovation and world-class quality products for over 50 years.

Hyundai L&C, formerly known as Hanwha L&C, is the first domestic flooring materials manufacturer that values humanity and the environment. With Distribution Channels in over 30 countries, Hyundai L&C is a flooring leader in luxury lifestyle, eco-friendly products, and ceaseless technological innovation.

Why trust Hyundai Flooring?

Premium Design

Hyundai is the designer's haven for flooring – get access to our widest selection of original, classic and contemporary designs of various patterns, textures and sizes – guaranteed to add that touch of class to your room.

Premium Product Performance

Passing the standards of the American Society for Testing & Materials (ASTM), Hyundai Flooring complies with the international standards for abrasion, fire and chemical resistance, dimensional stability, load resistance, residual indentation, resistance to heat and light, tensile strength and tear resistance. Hanwha flooring is backed by quality you can rely on day after day.

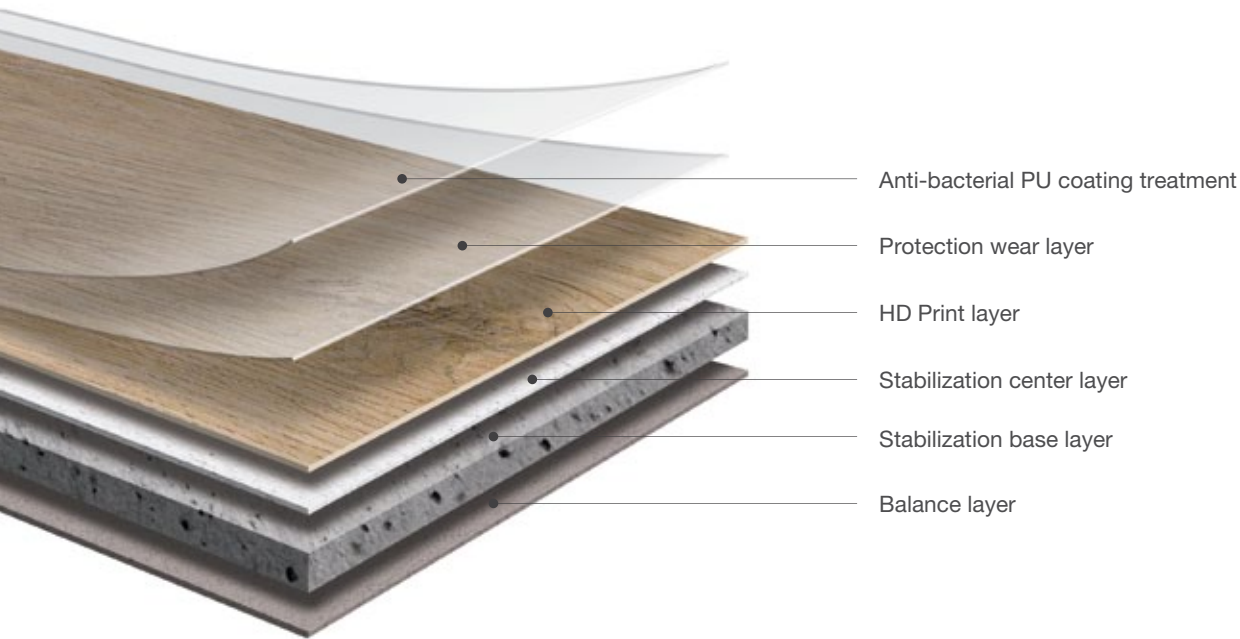
Premium Innovation

Hyundai is a high-tech materials company with distinct advantage as a manufacturer of PVC resins and PVC-based materials, developing breakthrough technologies such as the Regent Bio, the first TPO-based (Thermo Plastic Olefin), non-PVC, eco-friendly flooring that is safe for children & the environment.

Premium Sustainability

Hyundai is on a mission to grow greener. We have our sights set firmly on using renewable energy to achieve sustainable green growth on a global scale by reducing our environmental footprint, and those of our suppliers, by fostering active partnerships with like-minded organizations, and through various social contributions.

The Hyundai Advantage



Features



Durable

Hyundai Flooring will stand the test of time

- ✓ Surface will last even with heavy traffic due to application of wear layer
- ✓ Special UV coating prevents color from fading even when exposed to sunlight
- ✓ Does not tear, crack or result to indentation upon impact



Dimensionally Stable

Hyundai flooring will not shrink, expand or warp!

- ✓ Dimension is stable even when exposed to moisture or heat
- ✓ Flooring will be free from unsightly gaps after installation



Chemical and Stain Resistant

Marks can be easily wiped or removed

No permanent stain or change in surface appearance when exposed to common household and office substances such as coffee, soy sauce, acetone, other acids or strong bases



Fire Retardant

Hyundai Flooring prevents spreading of fire

- ✓ Will not catch fire due to cigarette butts and fire-causing materials
- ✓ Will extinguish fire upon contact

** Hyundai Flooring oxygen index is 45-49% vs 21% oxygen concentration in the air. Materials with oxygen index greater than 21% will not continue to combust.*



Waterproof

Hyundai Flooring is non-porous

- ✓ Water and other liquid substances will not penetrate your flooring in case of spillage or flooring compared to laminated or wood flooring
- ✓ Ideal for flood-prone or high-moisture content areas



Anti-bacterial

*Hyundai flooring puts top priority on health and well-being.

- ✓ Treated with nano-silver and anti-bacterial coating
- ✓ Kills 99.9% of bacteria upon contact
- ✓ Recommended for hospitals, schools and daycare centers



Excellent Sound Insulation

Better sound insulation compared to ceramic, laminated or wood flooring.



Easy to Clean and Maintain

Hyundai Flooring is easy to install and maintain

- ✓ Can be installed by non-professionals and end-users
- ✓ Change and reuse the material any time
- ✓ No cement dust, heavy loading or messy seam lines
- ✓ No need to vacate renovation site during installation
- ✓ Easy to clean – simply wipe and mop



Creating better quality of life.

At the heart of Hyundai Flooring is a mission:
To pave the way of high quality living for you.

We, at Hyundai Flooring, begin to fulfill this dream from the ground up. We constantly have you in mind, as we endeavor to provide the best quality flooring solutions possible. In the coming pages, we are proud to present to you the fruit of decades of passion for flooring. We are committed to bring you to greater heights.

Let's take the journey together.

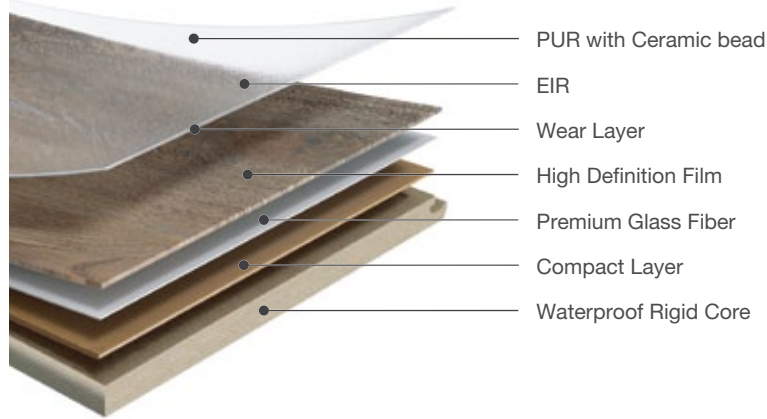


Visit our homepage

Crescendo WATERPROOF RIGID CORE Flooring collection presents real wood designs well suited for various applications. From traditional natural oak to unique vibrant woods. Crescendo is a definite upgrade to your lifestyle.

Application Office, Hotel, Restaurant, Resort, Kindergarten, Residential

Structure



Features



Waterproof



Easy Clean / Anti Scratch / High Durability



Perfect Dimensional Stability



Easy Installation

Välinge | UNILIN



Realistic EIR & High Definition Film



Multi - Use Residential / Commercial



Eco Friendly

- No Phthalate / Heavy-Metal / Formaldehyde
- 100% Recyclable

Test Report

Higher Definition Test		Abrasion Test		Moh's Hardness Test		
Crescendo	LVT	Crescendo	Laminate	Crescendo	LVT	Engineered Wood
High Definition Film	PVC Film	Taper: H22 / Cycle: 1,000		4H	2H	2H

Hybrid Floor Advanced Waterproof Plank

5.0mm(T) x 1220mm(L) x 178mm(W), 14pcs/Box, (3.04m²)
6.5mm(T) x 1220mm(L) x 178mm(W), 11pcs/Box, (2.39m²)
7.0mm(T) x 1220mm(L) x 178mm(W), 10pcs/Box, (2.17m²)





19002



NEW 19021



NEW 19022



NEW 19023



NEW 19024



NEW 19025



NEW 19026



NEW 19027



NEW 19028



NEW 19029



NEW 19030



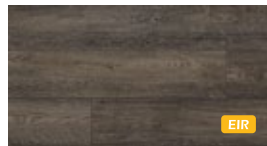
NEW 19031



NEW 19032



NEW 19033



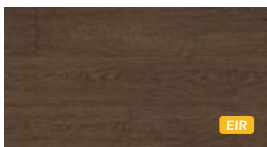
NEW 19034



NEW 19035



NEW 19036



NEW 19037



NEW 19038



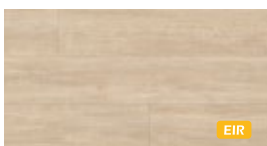
NEW 19039



NEW 19040



NEW 19041



NEW 19042



NEW 19043



NEW 19044



NEW 19045



NEW 19046



NEW 19047



NEW 19048



NEW 19049



NEW 19050

Classic

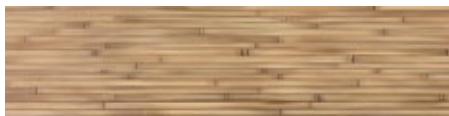
| *Luxury Vinyl Tile*

The Gold Tile Classic Luxury Vinyl Tiles boasts of a wide selection of wood, stone, fabric, abstract and carpet looks that can transform & upgrade any given space. Durability and outstanding performance, it is waterproof, and resilient surface makes easy installation and cleanup.

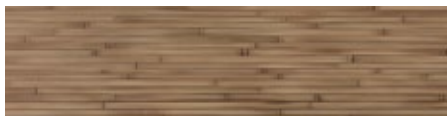
Application Commercial spaces such as offices, coffee shops, boutiques, restaurants, hotels, resorts, health spas, schools. Residential spaces such as living room, dining area, and bedrooms

Classic Wood

3.0mm(T) x 940mm(L) x 186mm(W), 19pcs/Box (3.32m²)



GWT 3921 Unibamboo



GWT 3922 Chinese Unibamboo



GWT 9021 Bleached Tasmanian Oak



GWT 9023 Butternut Hickory



GWT 9024 Oak Wood Cream



GWT 9026 Antique Elm



GWT 4497 Burmese Teak



GWT 4962 Burnt Driftwood Walnut



GWT 4903 Bleached Scandinavian Ash



GWT 4913 American Smoked Oak



GWT 4531 Aged Timber



GWT 4532 Smoked Timber



GWT 8492 Antique Pine Heartwood



GWT 8493 Brazilian Cherry



GWT 3521 Sugar Maple



GWT 3522 Hedge Walnut



GWT 3601 Natural Bamboo



GWT 3602 Chinese Bamboo



GWT 3711 Bleached Satinwood



GWT 3712 Classic Satinwood



GWT 3713 Asian Satinwood



GWT 3714 African Satinwood



GWT 3821 New York Promenade



GWT 3822 Toronto Boardwalk



GWT 3902 Carribean Pine



GWT 3903 Virginia Pine



GWT 4832 Dubai Avenue



GWT 4975 Brazillian Mahogany



GWT 4842 Tokyo Boulevard



GWT 4901 White Water Oak



GWT 4902 Scarlet Oak



GWT 4974 Philippine Mahogany



GWT 4975 Brazillian Mahogany



GWT 4943 Philippine Narra



GWT 4983 Beijing Crescent



GWT 4986 Berlin Walkaway



GWT 3911 Spanish Cedar



GWT 3912 Cedar of Lebanon



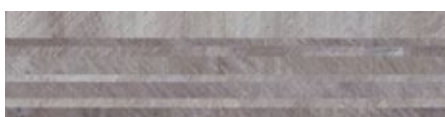
GWT 3913 California Redwood



GWT 3914 Oregon Sequioa



GWT 3831 Sydney Waterfront



GWT 3832 Barcelona Esplanade



GWT 3901 Austrian Pine



GWT 4841 Chicago Parade



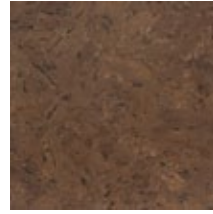
PT-K 8401
Rosé Wine Alabaster



PT-K 8402
Champagne Snow



PT-K 8403
Moscato Deep Tawny



PT-K 8404
Scotchwood Brown



PT-A 8701
Swan Lake



PT-A 8702
Romeo and Juliet



PT-F 8301
Pistacio Choco Chip



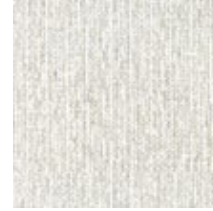
PT-F 8302
Crème Brulee



PT-F 8303
Blueberry Cheesecake



PT-F 8304
Cookies & Cream



PT-F 8305
Vanilla Sky



PT-F 8306
Winter Ice



PT-F 8307
Summer Sunset



PT-C 9741
Macy Gray Cloud



PT-C 9742
Avery Gainsboro



PT-C 9701
Francesca Apricot
Beige



PT-C 9713
Lorena Umber Brown



PT-C 9707
Elizabeth Blue Gray



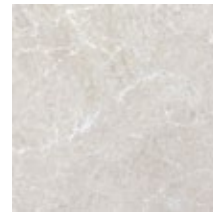
PT-C 9703
Helena Blush Pink



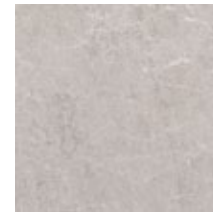
PT-C 9709
Amanda Blue Green



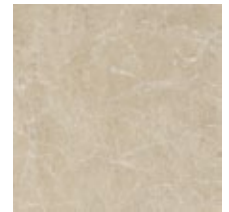
PT-C 9712
Patricia Cool Gray



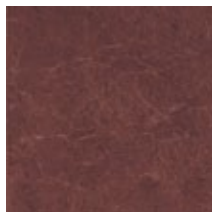
PT-S 7276
Classic Yule



PT-S 7281
Carra Grey



PT-S 7282
Crema Marfil



PT-S 7272
Tenesse Red Marble



PT-A 8201
Grullo Diseño



PT-A 8202
Mauve Compendio



PT-A 8111
Linen



PT-A 8112
Arsenic

Classic Square 500

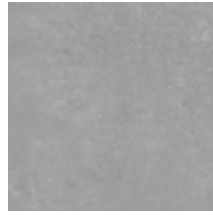
3.0mm(T) x 500mm(L) x 500mm(W), 13pcs/Box, (3.25m²)



NEW PT-B 7412
Dali Mosaic



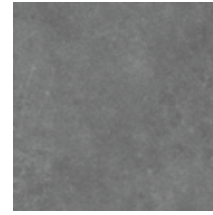
NEW PT-B 7413
Braque Mosaic



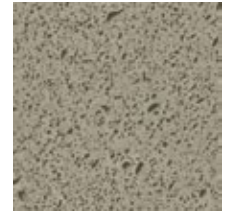
NEW PT-S 7401
Rhino Concrete



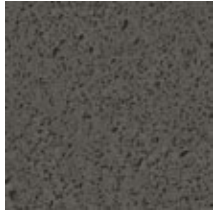
NEW PT-S 7402
Iron Concrete



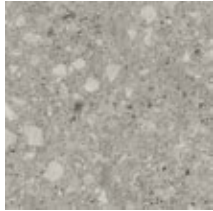
NEW PT-S 7403
Plum Concrete



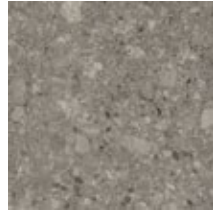
NEW PT-S 7404
Warm Pumice



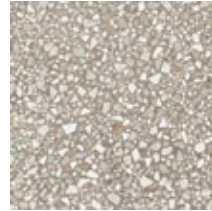
NEW PT-B 7405
Shadow Pumice



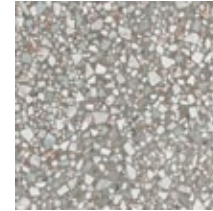
NEW PT-B 7406
Silver Quartzite



NEW PT-S 7407
Gray Quartzite



NEW PT-S 7408
Salt Granite



NEW PT-S 7409
Vignette Granite



NEW PT-S 7410
Baroque Ivory



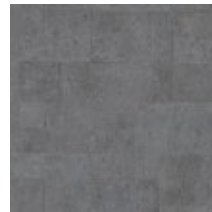
NEW PT-B 7411
Pieta Ivory



PT-S 7481
Bakken Versailles



PT-S 7482
Marcellus Versailles



PT-S 7483
Cubrian Versailles



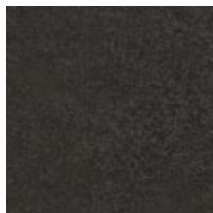
PT-S 7484
Valongo Versailles



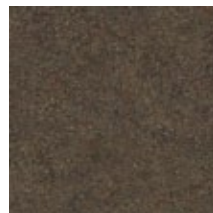
PT-S 7461
Nimbahera Limestone



PT-S 7462
Kota Limestone



PT-S 7464
Noir Belge Limestone



PT-S 7463
Rustic Limestone



NEW PT-B 7411



PT-K 8401 Rosé Wine Alabaster



NEW PT-B 7413 Braque Mosaic



NEW PT-S 7409 Vignette Granite

Colors may vary from actual tile.



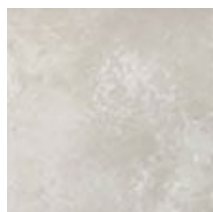
NEW PT-S 7505



NEW PT-S 7442 Marcellus Shale

Classic Square 600

3.0mm(T) x 600mm(L) x 600mm(W), 9pcs/Box, (3.24m²)



PT-S 7501
Cornbrash Sandstone



PT-S 7502
Elbe Sandstone



PT-S 7503
Dulce de Leche



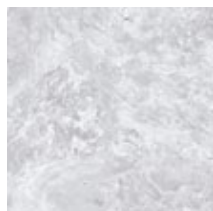
PT-S 7504
Peanut Butter & Jelly



NEW PT-S 7505
Powder Basalt



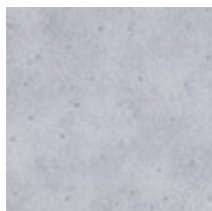
NEW PT-S 7506
Fossil Basalt



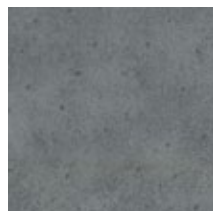
PT-S 7473
Hornister Slate



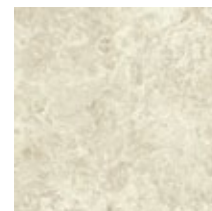
PT-S 7474
Skiddaw Slate



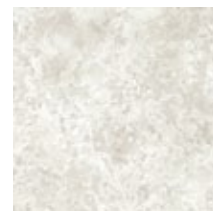
PT-S 7441
Bakken Shale



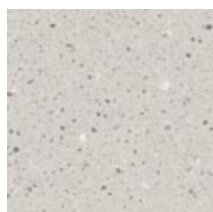
PT-S 7442
Marcellus Shale



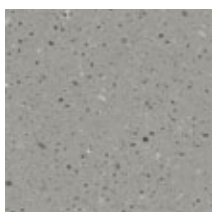
PT-S 7471
Lavagna Slate



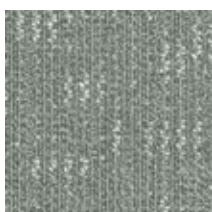
PT-S 7472
Galicia Slate



PT-S 7451
Feldspar Sandstone



PT-S 7452
Greywacke Sandstone



PT-C 7491
Veronica Ash Blue



PT-C 7492
Angelica Gold



PT-C 7493
Dorothy Maude



PT-C 7494
Catherine Cordovan

Master

| *Luxury Vinyl Tile*

The Gold Tile Master Collection comes in remarkably realistic wood, stone & carpet designs with a high-end look without the high-end price tag.

Application Light commercial spaces such as small offices and residential spaces such as living room, dining area, and bedrooms

Master Wood

3.0mm(T) x 940mm(L) x 186mm(W), 19pcs/Box, (3.32m²)



MTW 4477 Johor Walnut



MTW 4488 Harbin Elm



MTW 4487 Szechuan Elm



MTW 4486 Tibetan Elm



MTW 4462 Congo Oak



MTW 4463 Kinabalu Oak



MTW 4464 Sapo Oak



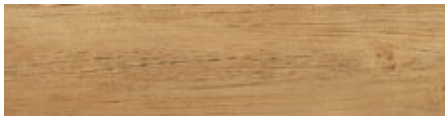
MTW 4465 Ecuador Oak



MTW 4471 Valdivian Walnut



MTW 4472 Daintree Walnut



MTW 4474 Sabah Walnut



MTW 4481 Sichuan Elm



MTW 4482 Borneo Elm



MTW 4483 Montecristo Elm



MTW 4484 Amazon Elm



MTW 4491 Galapagos Mahogany



MTW 4492 Karawari Mahogany



MTW 4493 Komodo Mahogany



MTW 4496 Garamba Mahogany



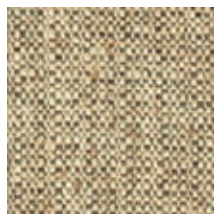
MTW 4497 Madagascar Mahogany



MTW 4483 Montecristo Elm



MTS 5511 Bisque



MTS 5521
Apricot Azalea Knit



MTS 5522
Peach Dahlia Knit



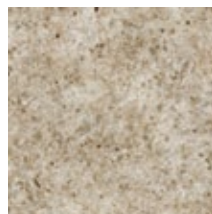
MTS 5523
Dark Sea Green
Terra Knit



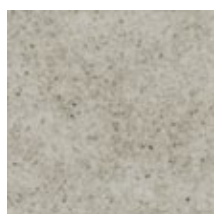
MTS 5524
Brown Grey Vira
Knit



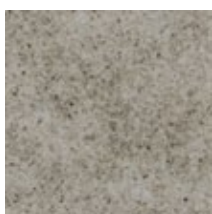
MTS 5525
Peach Dark Gaia
Knit



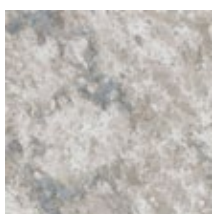
MTS 5531
Beige Tuscan



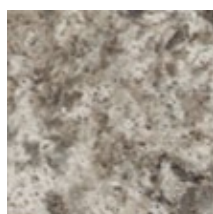
MTS 5532
Dark Grey Tuscan



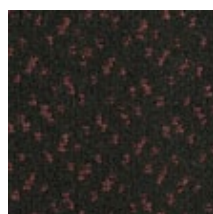
MTS 5533
Light Grey Tuscan



MTS 5536
Snow Ceasarstone



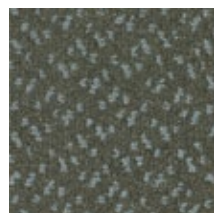
MTS 5537
Classico Ceasarstone



MTS 4451
Peach Grey Wool



MTS 4452
Sky Black Wool



MTS 4453
Red Black Wool



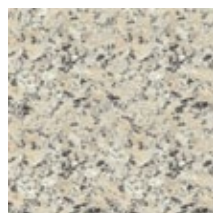
MTS 4424
Coati Medallion



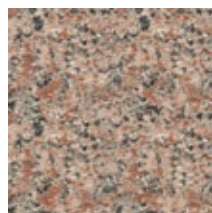
MTS 4425
Hyrax Blue Green



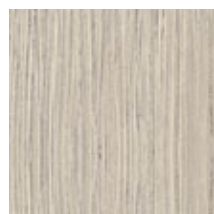
MTS 4433
Grey Batholith



MTS 4434
Yellow Granite



MTS 4435
Red Biotite



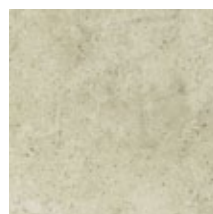
MTS 5511 Bisque



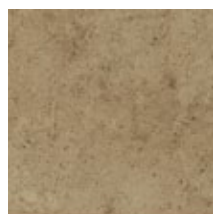
MTS 5512 Lazuline



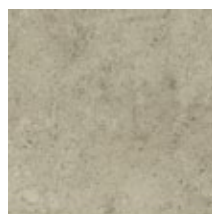
MTS 5513 Cafe Noir



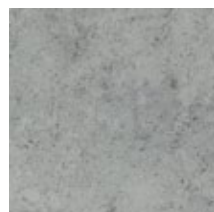
MTS 4411
Impala Ivorystone



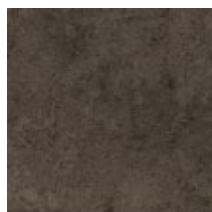
MTS 4413
Copperhead
Cavestone



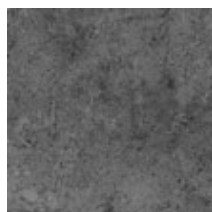
MTS 4414
Prairie Greystone



MTS 4415
Rhinoceros Limestone



MTS 4416
Beaver Fossilstone



MTS 4417
Elephant Earthstone



MTS 4421
Armadillo Gray



MTS 4422
Bonobo Dark Taupe



MTS 4423
Oriole Brown Gray

The GoldTile Special Edition Wood is the choice that brings the freshness of nature into your interior spaces. Definitely the Smart Choice!

Application Office, Hotel, Restaurant, Resort, Kindergarten, Residential

SE Wood

2.0mm(T) x 940mm(L) x 186mm(W), 19pcs/Box, (3.32m²)



SEW 3901 White Birch of Quebec



SEW 1013 Hinton Oak



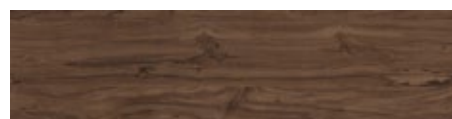
SEW 3015 Clanwilliam Gray Cedar



SEW 1035 Saint Helena Gumwood



SEW 6131 Honduras Rosewood



SEW 7065 African Blackwood



SEW 1035 Saint Helena Gumwood

Regent BIO

| Vinyl Composite Tile

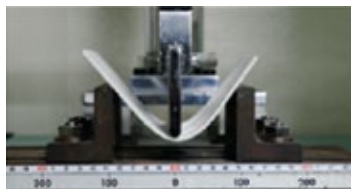
The All New Regent Bio Tile is made from 100% Bio-based Vegetable Plasticizers extracted from Coconut Palm seeds. A high performance alternative to PVC Tile, it enhances both design quality and performance in all Commercial applications where environmental sustainabilities are essential factors.

Application Commercial spaces such as offices, coffee shops, boutiques, restaurants, hotels, resorts, health spas, schools. Residential spaces such as living room, dining area, and bedrooms

Product Structure



Test report

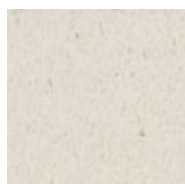


Regent BIO

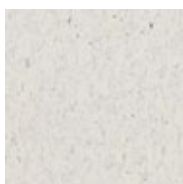


CT Tile

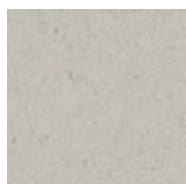
3.0mm(T) x 450mm(L) x 450mm(W), 16pcs/Box, (3.24m²)



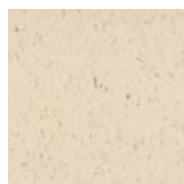
1901
Coconut White



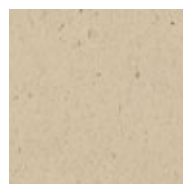
1902
Cauliflower



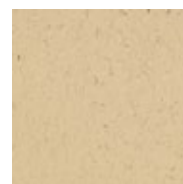
1903
Dragonfruit Grey



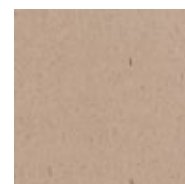
1904
Garlic



1905
Mushroom Beige



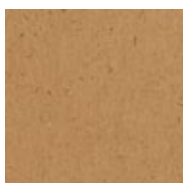
1906
Lanzones



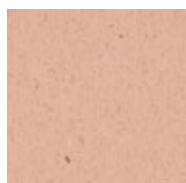
1907
Sapodilla



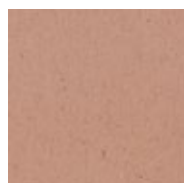
1908
Mango Yellow



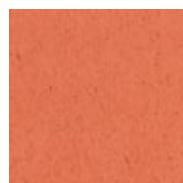
1909
Santol



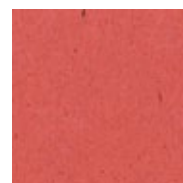
1910
Peach N' Cream



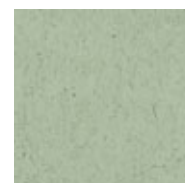
1911
Cacao



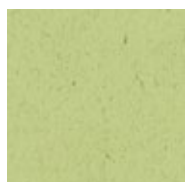
1912
Persimmon



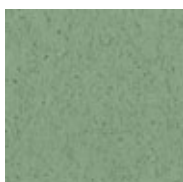
1913
Pomegranate



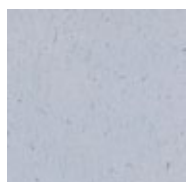
1914
Artichoke



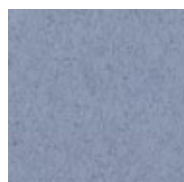
1915
Lime



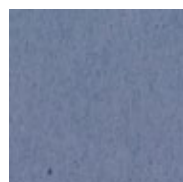
1916
Basil



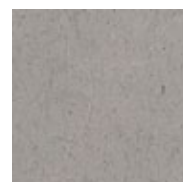
1917
Periwinkle



1918
Cornflower



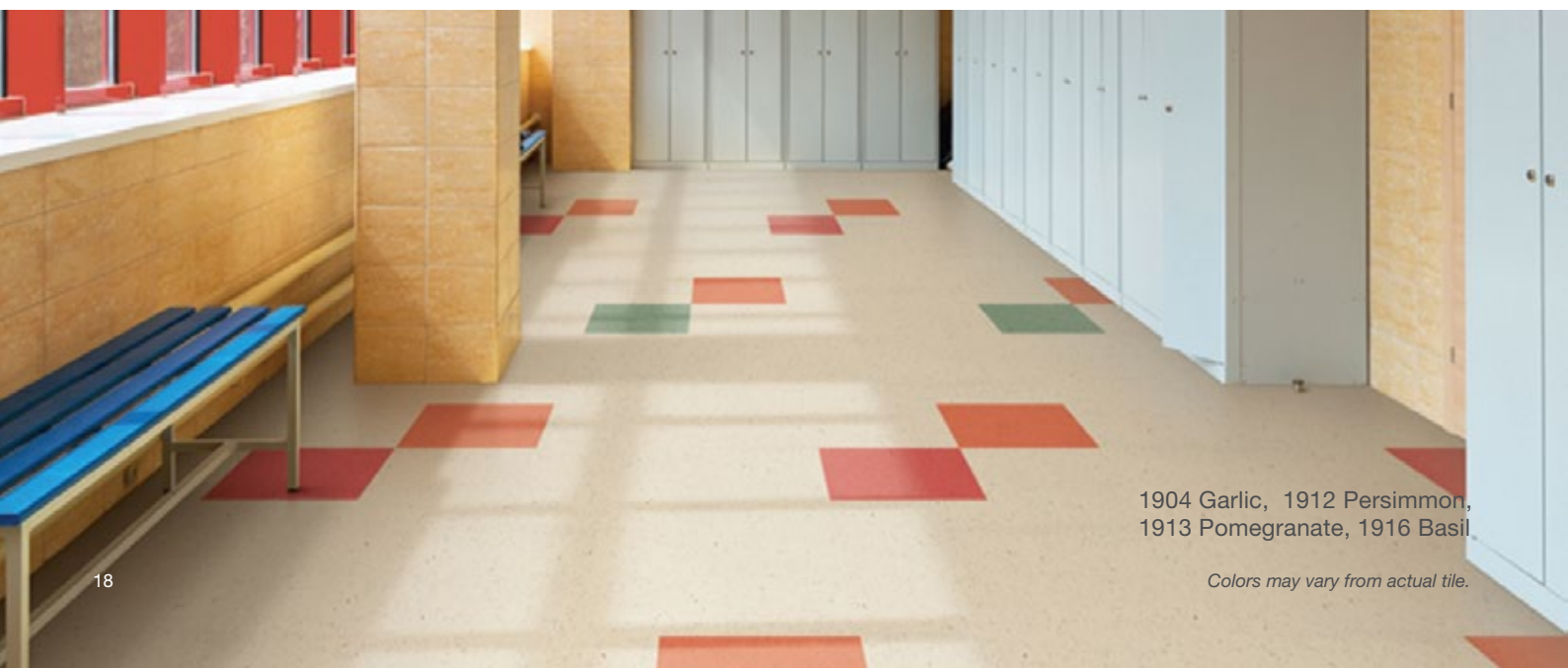
1919
Juniper Berry



1920
Kernel Grey



1921
Gray Squash



1904 Garlic, 1912 Persimmon,
1913 Pomegranate, 1916 Basil

Colors may vary from actual tile.



738 Chiffon Cake, 738 Peach Mousse , 741 Forest

Deluxe Tile

| Vinyl Composite Tile

Enjoy superior product functionality at the best value for any Commercial settings with the Hanwha Tile Collection manufactured for endurance and quality performance.

Application Commercial spaces such as offices, hotels, resorts, health spas, schools.
Residential spaces such as living room, dining area, and bedrooms

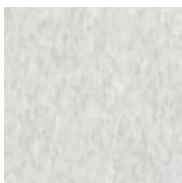
Deluxe

2mm (T) x 300mm (L) x 300mm (W), 55pcs/Box, (4.95m²)

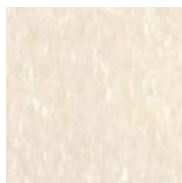
3mm (T) x 300mm (L) x 300mm (W), 37pcs/Box, (3.33m²) | 3mm (T) x 450mm (L) x 450mm (W), 16pcs/Box, (3.24m²)



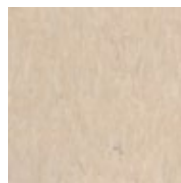
1120
Winter Sonata



NEW 1131
City life



NEW 1130
Romantic
Beige



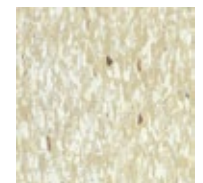
NEW 1132
Gold brown



196
Shanghai Dream



1102
Silk Road



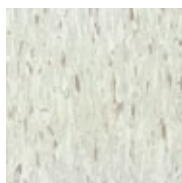
171
French Canvas



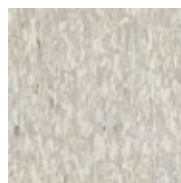
173
Hawaii Sand



1117
Milano White



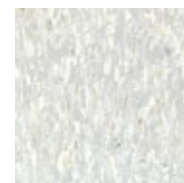
1106
New York Street



157
London Fog



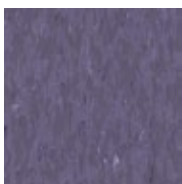
1107
Seattle Midnight



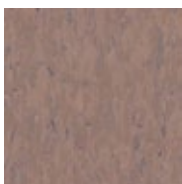
154
Seoul Wind



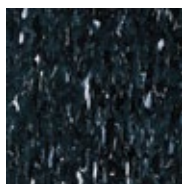
1109
Napoli



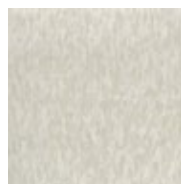
1121
Praha Moonlight



1122
Boston Brick



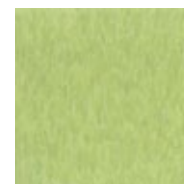
1197
Winter Nights



NEW 1133
Boracay
White Sand



NEW 1134
Boutique
Gray



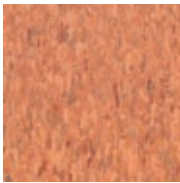
NEW 1135
Paris Green

Deluxe Gold

3mm (T) x 450mm (L) x 450mm (W), 16pcs/box (3.24m²)



722
Biscuit



724
Walnut Pie



726
Cookies & cream



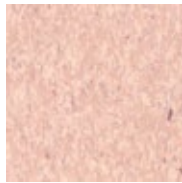
727
Eiffel Tower



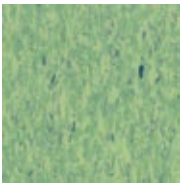
738
Chiffon cake



739
Peach mousse



740
Soul mate



741
Forest

MVP

3mm (T) x 450mm (L) x 450mm (W), 16pcs/Box, (3.24m²)



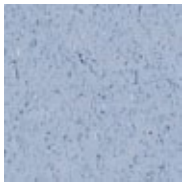
801
Alaska



802
Cereal



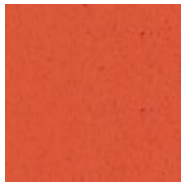
815
Pompeii



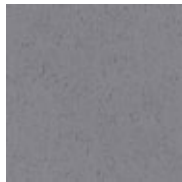
821
Morning air



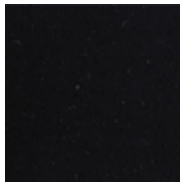
822
Florida sky



825
California orange



824
Urban gray



807
Germany black

Conductive Tile

3mm (T) x 450mm (L) x 450mm (W), 16pcs/Box, (3.24m²)

Application Computer rooms, test rooms, server pads, control rooms, clean rooms, semiconductor facilities and others that require anti-static flooring



HCD-501
Moonscape



HCD-503
Greyser



CR8281

Corona | Vinyl Sheet

With a wide variety of marble and carpet designs, antibacterial property, durability, and affordable price, Corona Premium is one of our best selling vinyl sheet.

Application Office, Hotel, Restaurant, Resort, Kindergarten, Residential

2.0mm(T) x 1.83m(W) x 20m(L), 1 Roll (36.6m²)



Colors may vary from actual tile.

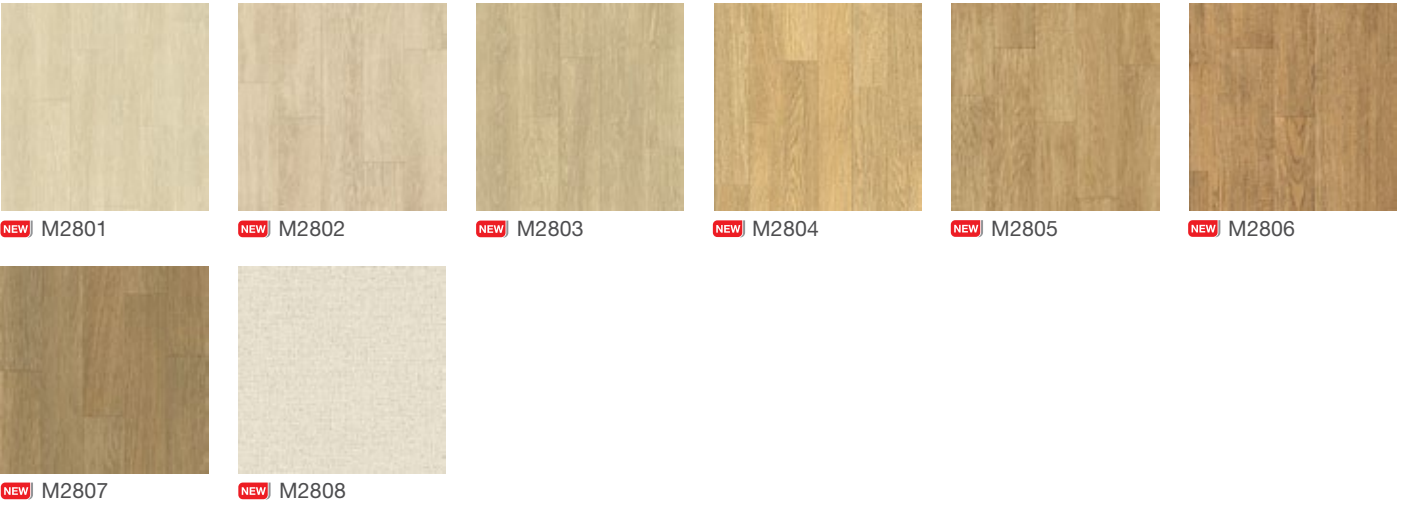
Myeongga | Vinyl Sheet

The Myeongga Collection has a special nano-silver antibacterial treatment and various distinct, smooth wood finishes with the longest length of 30m making it best for spacious residential rooms.

Application Office, Hotel, Restaurant, Resort, Kindergarten, Residential

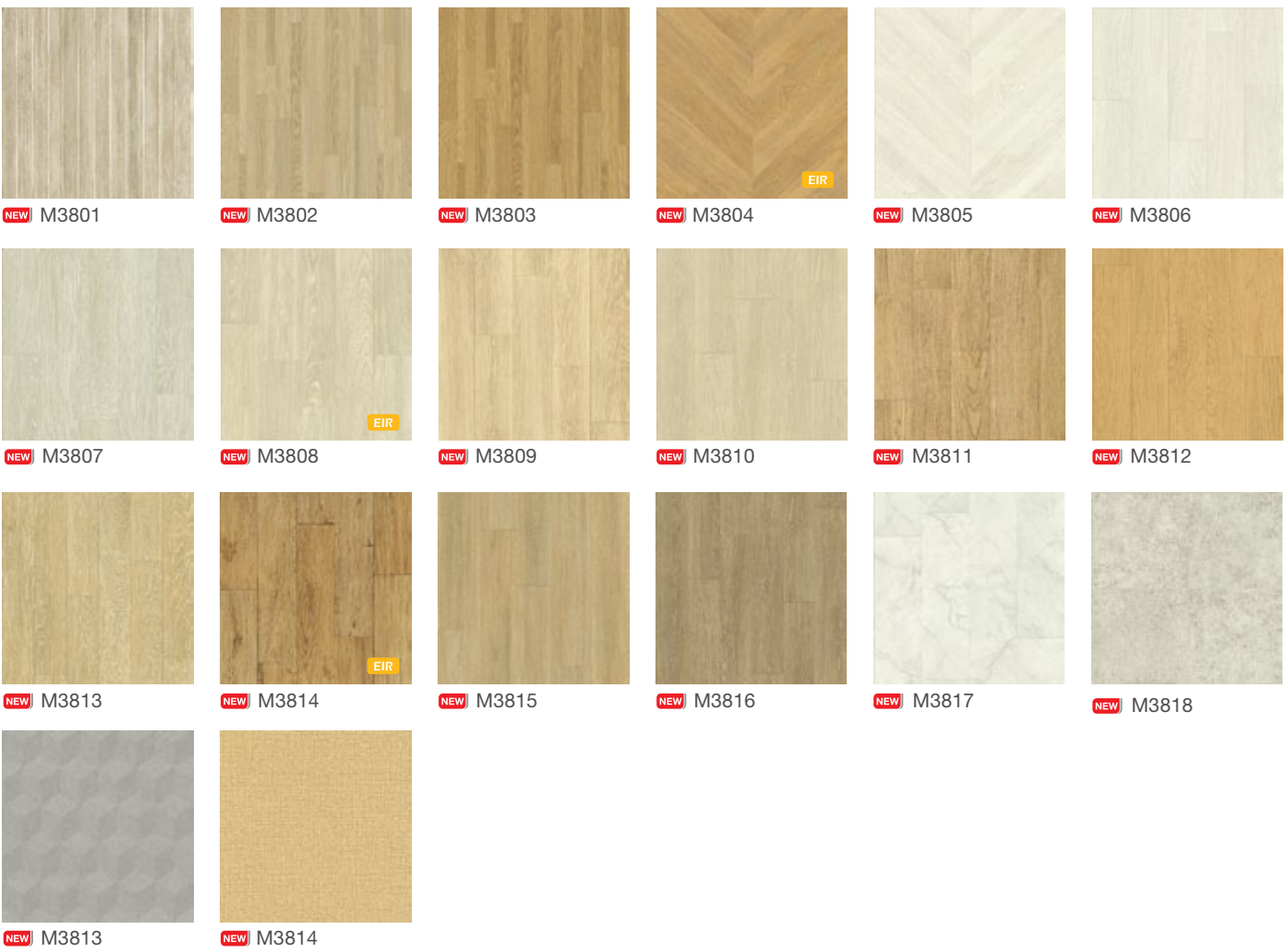
Original

2.0mm(T) x 1.83m(W) x 30m(L), 1Roll (54.9m²)



Premium

2.2mm(T) x 1.83m(W) x 25m(L), 1Roll (45.8m²)





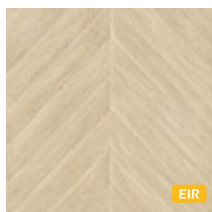
Hwangsil | Vinyl Sheet

The Hwangsil Collection provides outstanding comfort and gives a warm atmosphere for any living space. It has an Easy-to-Clean feature, Superior Sound Absorption Qualities and Cushioned Underlay for walking comfort.

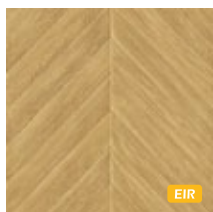
Application Residential Spaces such as Living Rooms, Family Rooms and Bedrooms. Living spaces for Senior Homes and Daycare Facilities provide safety and comfort.

Original

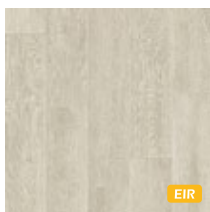
2.7mm(T) x 1.83m(W) x 25m(L), 1Roll, (45.8m²)



NEW H4701



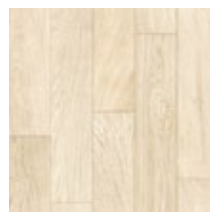
NEW H4702



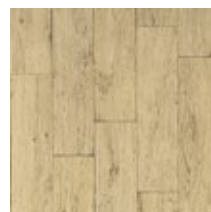
NEW H4703



NEW H4704



NEW H4705



NEW H4706



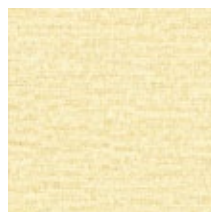
NEW H4707



NEW H4708



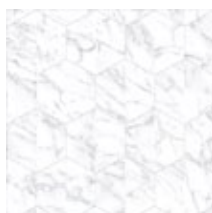
NEW H4709



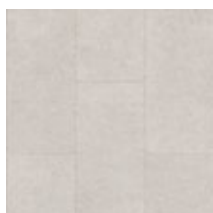
NEW H4710

Premium

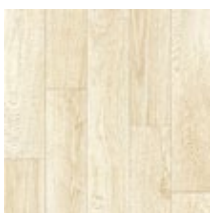
3.2mm(T) x 1.83m(W) x 25m(L), 1Roll, (45.8m²)



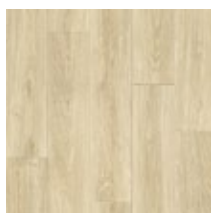
NEW H5701



NEW H5702



NEW H5703



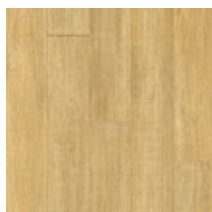
NEW H5704



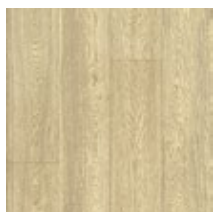
NEW H5705



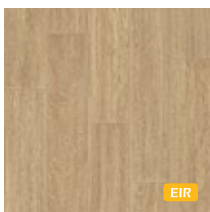
NEW H5706



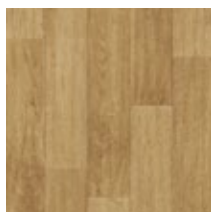
NEW H5707



NEW H5708



NEW H5709



NEW H5710



NEW H4703



NEW H5701

Colors may vary from actual tile.



NEW S6809 Single Waltz



NEW S6804 Sound of Music

Sorigium | Vinyl Sheet

The Sorigium Collection is the best residential vinyl sheet product in South Korea, recognized as a “Hit Product” by Seoul Newspaper, with an overall thickness of 4.5mm, unique wood patterns, special sound insulation, and a nano-silver antibacterial treatment.

Application Residential spaces such as living room, bedrooms, attics. Customized vehicles such as luxury tour buses; Aerobics and yoga studio

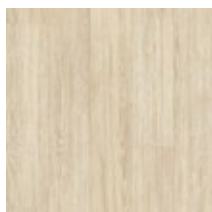
4.5mm(T) x 1.83m(W) x 18m(L), 1Roll, (32.9m²)



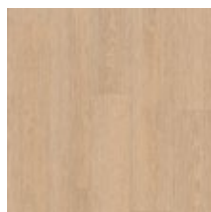
NEW S6801
White Canon



NEW S6802
Moonlight



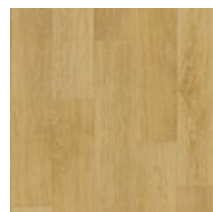
NEW S6803
Jazz Piano



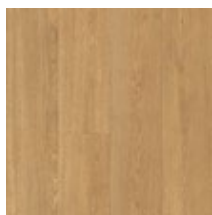
NEW S6804
Sound of Music



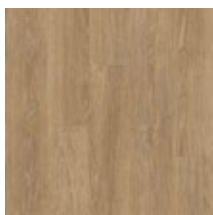
NEW S6805
Four Seasons



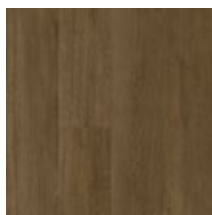
NEW S6806
Tango of Passion



NEW S6807
Romantic Ballad



NEW S6808
Chachacha



NEW S6809
Single Waltz



NEW S6810
Modern Harmony

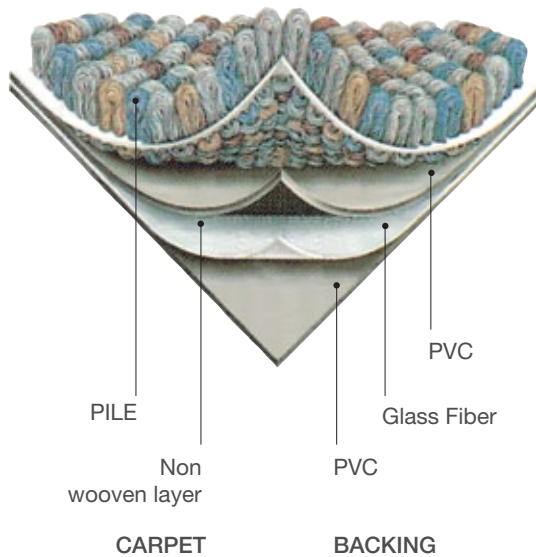
Carpet Tile

| Specialty Flooring

CarpetTile Collection offers a wide range of choices from solid, graphic, and nylon designs. Be creative without undermining quality and performance with the following properties: electrostatic dissipation, and special backing construction made of non-woven PET, glass fiber, and pure PVC.

Application Office Space: Hospital Office, Meeting Rooms, Hallways | Commercial Spaces: Restaurants, Retail Shops, Exhibition Halls
Educational Facilities: Schools, Institutes, Training centers, Library | Others: Hotels, Condominiums, Airports

Product Structure



Providing Superior Quality for Various Product Applications

Provides a wide range of carpet products from the economical price PP Carpet to the High-end Nylon Yarn Carpets. Solution Dyed Application ensures no discoloration from sunlight, friction and moisture.



Eco-friendly Building Material Certifications

Eco-friendly carpet certified by CRI Green Label and rated product Certificate "Excellent" from Singapore



Differentiated Graphic Patterns

The use of Metallic Yarns with distinguished weaving technique produces a stylish and luxurious appearance.



Pure 100% PVC Raw materials used for the Backing

Durable and Excellent sound absorption. Odor resistant PU/Bitumen Backing.



Excellent Stain Resistant

Has Anti-Stain treatments which gives excellent stain resistance and anti-fouling property.

GRADE		PP Solid		PP Graphic	Nylon Graphic		
		HC-900	HC-800	HC-5020	Mineral	HC-7060 HC-7070	HC-5800 HC-7200
Size		500mm x 500mm					
File Type		Level loop		Multi Level Loop (Graphic Type)	Level Loop (Graphic Type)	Multi Level Loop (Graphic Type)	
Yarn Type		100% Polypropylene BCF Solution dyed			100% Nylon BCF Solution Dyed		100% Nylon 6,6 BCF Solution Dyed
File Density	Gauge	1/10"	1/10"	1/10"	1/10"	1/10"	1/10".1/12"
	Stitch	12.5	11	11	10.2	10	8.4~11
Thickness		6.0mm (±0.5mm)	6.0mm (±0.5mm)	7.0mm (±0.5mm)	6.6mm (±0.5mm)	8.0mm (±0.5mm)	6.0mm~8.5mm (±0.5mm)

Packing	16Pcs/Box (4m²)
Backing	PET Non-woven + Glass Fiber + PVC
Electrostatic	Below 2Kv (KS K 2621)
Light Fastness	Over Level 4 (KS K 2621)
Flammability	Burning Time < 20 seconds, Carbonization Length < 10cm



PP Solid

Solid					
	HC 915	HC 995	HC 997	HC 812	HC 815
Graphic					
	HC 837	HC 841	HC 853		
Graphic					
	HC 5021	HC 5022	HC 5023	HC 5024	

Nylon



HC 7681



HC 7683



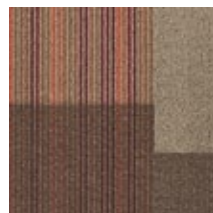
HC 7663



HC 7202



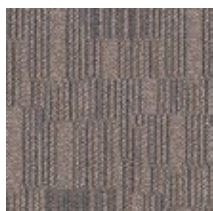
HC 7206



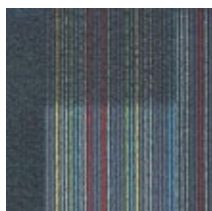
HC 7667



HC 5893



HC 5892



HC 7668

Dignity Collection



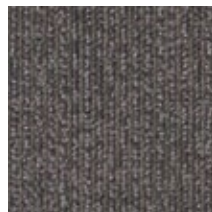
Mineral



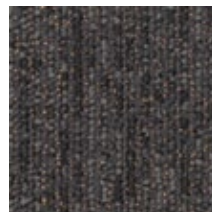
ML103



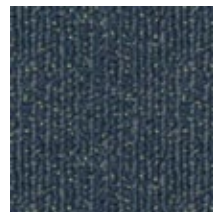
ML106



ML111



ML112



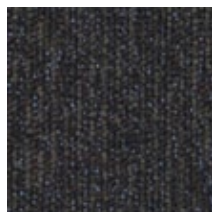
ML 120



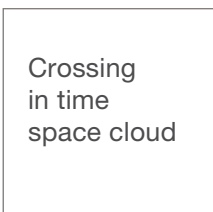
ML 122



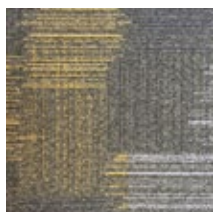
ML109



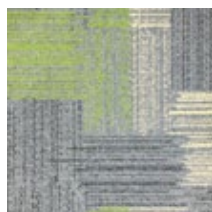
ML 115



Crossing
in time
space cloud



HC 7064



HC 7061



HC 7072



HC 7077



Natural

Savvy and comfortable space with colors inspired by Nature



Energetic space with lattice stripe patterns and vivid colors

Pop



Modern

Modern and trendy space with casual and natural flow



Classic

Luxurious space with the use of sensuous stripes

Colors may vary from actual tile.

Installation & Care Guides

INSTALLATION

Things you will need:

1. Hyundai Resilient Floor Tiles and Planks
2. Hyundai or any water-based adhesive for vinyl
3. Adhesive applicator or spreader
4. Meter tape or tape measure
5. Pencil or chalk (as marker)
6. Carpenter's square
7. Sharp utility knife

Subfloor Preparation:

1. Install over smooth, leveled and dry concrete or plywood floors.
2. Subfloor must be clean and free from dust, grease, grime, or wax.
3. Patch or fill cracks if necessary.
4. If old floor has poor texture, use leveling compound to smoothen the surface.
5. If subfloor
 - Has existing resilient,
 - > Remove existing resilient tiles.
 - > Clean and remove adhesive residues.
 - Is wood,
 - > Check wood if it is firmly nailed or attached to the original subfloor.
 - > Repair any holes, indentations or open joints.
 - > Manually sand or use electric sander to smooth out rough areas.
 - > It must be smooth, clean, dry, and dust-free.
 - Is concrete,
 - > Make sure it is smooth and leveled.
 - > Make sure its pH moisture has been neutralized.
 - > It must be free from holes, cracks and humps.
 - > It must be clean, dry, and dust-free.

To start Installing:

1. Find and mark guidelines to the center point of the room.
2. Lay row of tiles in both directions from the center.
3. Adjust to see the least wastage from cutting at the borders.

Spread Adhesive:

1. Cover and spread evenly the water-based adhesive to a portion of the floor.
2. Allow adhesive to set according to manufacturer's instructions.
3. For walls and ceiling installations, use contact cement or construction adhesive instead of waterbased adhesive.

Tile Laying

1. Place the first tile into place starting at center. Make sure it is positioned correctly and press down firmly.
2. Continue by laying full tiles from center.
3. Make sure arrows at the back all point in the same direction

Cutting and Fitting

1. Place the tile to be cut exactly over the last full tile; lay another full tile against the wall and mark the cutting line where the tiles overlap.
2. Using your sharp utility knife, cut tile on line. Check if the cut tile fits. Don't force fit.
3. Install tile and press firmly into place.

CARE GUIDE

Initial Maintenance (After Installation)

1. Sweep or vacuum dust and dirt.
2. Remove excess dried adhesives using a clean damp cloth.
3. Diluted stripping solution can be used hard to remove stains.
4. If necessary, dry buff with rotary machine fitted with 3M™ red cleaning pad or equivalent brush.

Daily/Regular Maintenance

1. Sweep or vacuum regularly.
2. For heavy dirt and stains, wash with floor cleaner or dish washing liquid.
3. Do not use strong detergents and abrasive cleaners.

Periodic Maintenance

1. For light scrubbing – Dry brush with rotary machine fitted with 3M™ red cleaning pad or equivalent brush.
2. For deep scrubbing – Spray clean while using rotary machine fitted with 3M™ blue/green cleaning pad or equivalent brush.
3. For a glossy shine, apply and polish with a liquid floor polish.
4. Polishing machine fitted with 3M™ white polishing pad can also be used.

Restorative Maintenance – Stripping

1. Flooring can be stripped periodically using recommended diluted stripping solution.
2. When using automatic floor scrubbing machine, it is recommended to use single disc 3M™ scrubbing pad blue/green or equivalent brushes for VCT; red or equivalent brush for LVT and Vinyl Sheets.

Warning : Do not use black or brown 3M™ pads or their equivalent as this will permanently damage the floor.

Specifications

	Product Line	Dimension	Thickness	Wear Layer	Packaging (pcs/box)	Coverage (sqm/box)
Luxury Vinyl Tile						
RVP Rigid Vinyl Plank	Hybrid Waterproof Plank	178mm x 1220mm	5.0mm	0.25mm	14	3.04
		178mm x 1220mm	6.5mm	0.3mm	11	2.39
		178mm x 1220mm	7.0mm	0.5mm	10	2.17
Crescendo Classic	Classic Wood	186mm x 940mm	3.0mm	0.15mm	19	3.32
	Classic Square 450	450mm x 450mm	3.0mm	0.15mm	16	3.24
	Classic Square 500	500mm x 500mm	3.0mm	0.15mm	13	3.25
	Classic Square 600	600mm x 600mm	3.0mm	0.15mm	9	3.34
Crescendo Master	Master Wood	940mm x 186mm	3.0mm	0.07mm	19	3.32
	Master Square	450mm x 450mm	3.0mm	0.07mm	16	3.24
Crescendo SE	Wood SE	940mm x 186mm	2.0mm	0.15mm	28	4.90
Vinyl Composition Tile						
	Regent Bio	450mm x 450mm	3.0mm	n/a	16	3.24
	Deluxe Tiles	300mm x 300mm	2.0mm	n/a	55	4.95
		300mm x 300mm	3.0mm	n/a	37	3.33
		450mm x 450mm	3.0mm	n/a	16	3.24
	Deluxe Gold	450mm x 450mm	3.0mm	n/a	16	3.24
	MVP	450mm x 450mm	3.0mm	n/a	16	3.24
	Coductive	450mm x 450mm	3.0mm	n/a	16	3.24
Vinyl Sheets						
	Corona	1.83m x 20m	2.0mm	0.5mm	1 roll	36.6
	Myeongga Original	1.83m x 30m	2.0mm	0.15mm	1 roll	54.9
	Myeongga Premium	1.83m x 25m	2.2mm	0.2mm	1 roll	45.8
	Hwangsil Original	1.83m x 25m	2.7mm	0.3mm	1 roll	45.8
	Hwangsil Premium	1.83m x 25m	3.2mm	0.3mm	1 roll	45.8
	Sorigium	1.83m x 18m	4.5mm	0.5mm	1 roll	32.9
Carpet Tiles						
	PP Solid HC-800	500mm x 500mm	6.0mm (±0.5mm)	n/a	16	4.0
	PP Solid HC-900	500mm x 500mm	6.0mm (±0.5mm)	n/a	16	4.0
	PP Graphic HC- 5020	500mm x 500mm	7.0mm (±0.5mm)	n/a	16	4.0
	Nylon Graphic HC- 7000	500mm x 500mm	8.0mm (±0.5mm)	n/a	16	4.0
	Nylon Graphic HC- 7600, HC- 7200, HC 5800	500mm x 500mm	6.0~8.5mm (±0.5mm)	n/a	16	4.0
	Nylon Graphic Mineral Dignity Collection	500mm x 500mm	6.6mm (±0.5mm)	n/a	16	4.0

* Standard Wear Layer indicated.

Wear layer can be customized from 0.07mm, 0.10mm, 0.20mm, 0.30mm, 0.50mm or 0.70mm depending on specifications and application usage.

Certifications



ISO 9002 Quality Management System

Hyundai products undergo high quality procedures to ensure that products are produced, installed and serviced at its best.



ISO 9002 Quality Management System

Hyundai products undergo high quality procedures to ensure that products are produced, installed and serviced at its best.



ISO 9001 Quality Management System

Hyundai manages its business and follows procedures that is believed to produce optimal results for the company and for its customers in terms of designs and development.



ISO 14001 Environmental Management

Hyundai develops and controls its operations in such a way that its processes minimize negative environmental effects, and comply with applicable laws and environmental requirements set by the government or other environmental institutions.



Korean Standard Association

All product features, specifications and test results were conducted using KS M 3802:2008 method for PVC and KS K 2621 method for Carpet, to ensure the promised premium quality and performance of Hyundai flooring products.



Marine Equipment Directive

Hyundai vinyl sheet and RubberTile are MED-D-1392 certified under the Marine Equipment Directive, bearing the seal of conformity to marine equipment requirements and specifications both in the design and production phase.



Korea Eco-label

Hyundai flooring is compliant to the institute's various operations related to improvement of eco-products and product environmental friendliness.



Low Carbon Emission Certification

In recognition of its responsibility to contribute to international efforts to reduce greenhouse gases and compliance to the "Low Carbon Green Growth" policy of the government.



KOSHA 18001

Hyundai has established safety and health management systems for its employees and partners in the construction and manufacturing industries.



Green Label Plus

Indoor Air Quality (IAQ) is an important environmental consideration, since we spend 90% of our time indoors. CRI uses scientifically established standards to test carpets, cushions and adhesives to help specifiers identify products with very low emissions of VOCs.



Green Company Designation

Hyundai L&C Corporation bears the mark of Green Company Designation by the Ministry of Environment (South Korea). This translates to compliance to standards and regulations set towards an ecologically sound and environmentally healthy company.



36 Months Warranty

Hyundai warrants its products against manufacturing defects for 36 months from date of purchase.

About Us



Builder's Choice Inc. (BCI) is a privately held company formed in November of 2003, primarily engaged in the importation, distribution, marketing and sales of premium flooring solutions. Since its establishment, BCI has been delivering innovation and creativity as the trendsetter in the PVC flooring solutions industry in the Philippines. BCI is the exclusive distributor of Hyundai Flooring and a proud member of The WOW Group.



The WOW Group is mainly engaged in importing, distributing, marketing, sales and services. The group offers a diverse portfolio of premium products from established brands sourced around the world. Targeting the sectors of Entertainment, Energy & Environment, as well as Food & Wellness; these have been chosen to ensure that the Filipinos get better quality products, backed by unrivalled service.

Our Philosophy is simply that,
"The Filipino Deserves Better!"

OUR BRANDS:

Entertainment:



SENNHEISER



SONY



MA

ROBE



GROUND ZERO
GERMAN ENGINEERING



audison HERTZ

Energy & Environment:



HAEMA



Food & Wellness:





L & C

Exclusive Philippine Distributor:



📍 Showroom and Office: 1081 EDSA Balintawak, Quezon City
☎ (632) 362-1016, (632) 362-2540 loc 209 🖨 (632) 330-3589
🌐 www.builderschoice.com.ph 📘 BuildersChoiceInc

A member of:

The
WOW
Group
better. Better. BETTER.